

# BOARD OF DIRECTORS



Regular Meeting Agenda  
October 13, 2021  
Location: Virtual Meeting via Teleconference  
Kentfield, CA

ATTENTION: This will be a virtual meeting of the Board of Directors pursuant to Executive Order N-29-20 issued by the Governor of the State of California. There will not be a public location for participating in this meeting, but any interested member of the public can participate telephonically by utilizing the dial-in information printed on this agenda. If any member of the public has a request for a reasonable modification or accommodation for accessing this meeting due to a disability, they should contact Jena Wilson at [Jwilson@kentfieldfire.org](mailto:Jwilson@kentfieldfire.org)

Zoom Video Conference link: <https://us02web.zoom.us/j/9459048313>

Meeting ID: 945 904 8313

Call in Line: 1 (669) 900-6833, when prompted, enter meeting ID 945 904 8313-#

Time: 6:30 p.m. For clarity of discussion, the Public is requested to MUTE except:

1. During Open Time for public expression item
2. Public comment period on agenda items.

**NOTE: The meeting will be recorded.**

1. CALL TO ORDER 6:30 p.m. Agenda available on the KFD website.
2. PLEDGE OF ALLEGIANCE
3. ROLL CALL
4. VOTE TO CONTINUE VIRTUAL MEETINGS AB 361 – Chief Pomi  
Adoption of **Resolution 8-2021** for a Continuation of Teleconferenced/Zoom Board of Director Meetings. Staff recommends that the Board adopt 8-2021, a resolution of the Board of Directors of the Kentfield Fire Protection District proclaiming a local emergency, ratifying the proclamation of a State of Emergency by Executive Order N-08-21, dated June 11, 2021, and authorizing remote teleconference meetings of the legislative bodies of the Kentfield Fire Protection District for the period October 13, 2021 – December 8, 2021, pursuant to Brown Act provisions.

**Board Action/Public Comment/Motion/BOD Roll Call Vote**

\*District facilities comply with the Americans with Disabilities Act. If special accommodations are needed, please contact the District Administrative Office as soon as possible (415-453-7464).

5. APPROVAL OF MINUTES

The Board may choose to approve the minutes of the September 8, 2021 meeting.

**Board Action/Public Comment/Motion/BOD Roll Call Vote**

6. ORAL COMMUNICATION

This time is provided for the public or Board Members to address the Board on matters not on the agenda. The Board of Directors has limited the total amount of time allocated for public testimony for each individual speaker to three (3) minutes. Any request that requires Board action may be set by the Board for a future agenda or referred to staff.

7. AGENDA ADJUSTMENTS

8. SPECIAL ANNOUNCEMENTS/PRESENTATIONS

- A. Fuel Reduction Projects 2021 – Chief Pomi/DFM Pasero
  - 1. Buckeye and Goodhill Roadside Fuel Reduction
  - 2. 400 Block of Crown Road Roadside Fuel Reduction
  - 3. Upland Road and Crown Road Roadside Fuel Reduction

9. UNFINISHED BUSINESS

- A. Kentfield Fire District Type 3 Fire Engine – Chief Pomi/KFD Staff Update  
**Board Discussion**

10. NEW BUSINESS

- A. Kentfield Fire District Type 3 Fire Engine Purchase proposal – Chief Pomi  
**Board Action/Public Comment/Motion/BOD Roll Call Vote**
- B. 2021-2022 Budget adjustment – Chief Pomi  
**Board Action/Public Comment/Motion/BOD Roll Call Vote**

11. CHIEF'S REPORT – Receive and File

12. DIRECTOR MATTERS

Directors may report on their activities and meetings

13. CORRESPONDENCE: Thank You notes, Western City article, Cal Fire Bulletin, Marin Voice, MERA Next Generation Project.

14. REPORTS

- A. Overtime, Incident – September 2021

15. APPROVAL OF MONTHLY EXPENSES

Approval of September warrant 805303918 to and including 805303966 for \$537,137.68

**Board Action/Public Comment/Motion/BOD Roll Call Vote**

CONFIRM NEXT MEETING DATE: November 10, 2021

16. MOMENT OF SILENCE

17. ADJOURNMENT


Mark Pomi - Chief

# KENTFIELD FIRE PROTECTION DISTRICT

Phone (415) 453-7464  
Fax (415) 453-4578

1004 SIR FRANCIS DRAKE BOULEVARD  
KENTFIELD CA. 94904

---

**TO:** Board of Directors  
**FROM:** Mark Pomi, Fire Chief   
**SUBJECT:** AB 361 - KFD using zoom for its board meetings  
**DATE:** 9/29/2021

The Marin HHS continues to encourage social distancing and limiting in person meetings. AB 361 only applies to a proclaimed state of emergency under specific circumstances. By approving Resolution 8-2021 the Kentfield Fire Protection District's ratification of the Governor's Proclamation of a State of Emergency dated 6-11-2021 will remain, and allow the Kentfield Fire District to continue use zoom for our board meetings so that all can participate while we mitigate the risk of exposure. The Kentfield Fire District is committed to preserving and nurturing public access and participation in meetings of the Board of Directors, while ensuring a safe and healthy environment.

Attached: **Resolution 8-2021**

Staff recommends that the Board review, discuss, and consider approving.

## **Kentfield Fire Protection District**

1004 SIR FRANCIS DRAKE BOULEVARD  
KENTFIELD, CALIFORNIA 94904-1468  
[www.kentfieldfire.org](http://www.kentfieldfire.org)

### **RESOLUTION NO. 8-2021**

**A RESOLUTION OF THE BOARD OF DIRECTORS OF THE KENTFIELD FIRE PROTECTION DISTRICT PROCLAIMING A LOCAL EMERGENCY, RATIFYING THE PROCLAMATION OF A STATE OF EMERGENCY BY EXECUTIVE ORDER N-08-21, DATED JUNE 11, 2021, AND AUTHORIZING REMOTE TELECONFERENCE MEETINGS OF THE LEGISLATIVE BODIES OF THE KENTFIELD FIRE PROTECTION DISTRICT FOR THE PERIOD OCTOBER 13, 2021 – DECEMBER 8, 2021 PURSUANT TO BROWN ACT PROVISIONS.**

WHEREAS, the KENTFIELD FIRE PROTECTION DISTRICT is committed to preserving and nurturing public access and participation in meetings of the Board of Directors; and

WHEREAS, all meetings of KENTFIELD FIRE PROTECTION DISTRICT's legislative bodies are open and public, as required by the Ralph M. Brown Act (Cal. Gov. Code 54950 – 54963), so that any member of the public may attend, participate, and watch the District legislative bodies conduct their business; and

WHEREAS, the Brown Act, Government Code section 54953(e), makes provisions for remote teleconferencing participation in meetings by members of a legislative body, without compliance with the requirements of Government Code section 54953(b)(3), subject to the existence of certain conditions; and

WHEREAS, a required condition is that a state of emergency is declared by the Governor pursuant to Government Code section 8625, proclaiming the existence of conditions of disaster or of extreme peril to the safety of persons and property within the state caused by conditions as described in Government Code section 8558; and

WHEREAS, it is further required that state or local officials have imposed or recommended measures to promote social distancing, or, the legislative body meeting in person would present imminent risks to the health and safety of attendees; and

WHEREAS, such conditions now exist in the District, specifically the surge of Covid-19 cases related to the Delta Variant; and

WHEREAS, AB 361 allows for the continuation of teleconferenced meetings to ensure social distancing, which will avoid the potential spread of the Delta Variant among the unvaccinated and the vaccinated; and

WHEREAS, the Board of Directors does hereby find social distancing continues to be recommended by the Centers for Disease Control and Marin County Public Health Officers; and

WHEREAS, the District will continue to use a Zoom platform, which does not require registrations, provides a non-internet telephone only option, and has proven over the past 18 months to adequately allow for public participation and comment, to provide free access to the Board of Director meetings,

NOW, THEREFORE, THE BOARD OF DIRECTORS OF KENTFIELD FIRE PROTECTION DISTRICT DOES HEREBY RESOLVE AS FOLLOWS:

Recitals. The Recitals set forth above are true and correct and are incorporated into the Resolution by this reference.

Proclamation of Local Emergency. The Board hereby proclaims that it has considered the state of emergency, and finds that a local emergency now exists, and Marin County Health officers continue to recommend social distancing and avoidance of in person meetings.

Ratification of Governor's Proclamation of a State of Emergency. The Board hereby ratifies the Governor of the State of California's Proclamation of State of Emergency, effective as of its issuance date of June 11, 2021.

Remote Teleconference Meetings. The Fire Chief and legislative bodies of KENTFIELD FIRE PROTECTION DISTRICT are hereby authorized and directed to take all actions necessary to carry out the intent and purpose of this Resolution including, conducting open and public meetings in accordance with Government Code section 54953(e) and other applicable provisions of the Brown Act.

Effective Date of Resolution. This Resolution shall take effect immediately upon its adoption and shall be effective until December 8, 2021, or such time the Board of Directors adopts a subsequent resolution in accordance with Government Code section 54953(e)(3) to extend the time during which the legislative bodies of KENTFIELD FIRE PROTECTION DISTRICT may continue to teleconference.

**PASSED AND ADOPTED** by the Board of Directors of KENTFIELD FIRE PROTECTION DISTRICT, this 13th day of October, 2021, by the following vote:

AYES:

NOES:

ABSENT:

---

Steve Gerbsman, Chairman, Board of Directors

ATTEST:

---

Barry Evergettis, Secretary, Board of Directors

**KENTFIELD FIRE PROTECTION DISTRICT  
BOARD OF DIRECTORS MEETING**

**MEETING TYPE:** Regular – Virtual Meeting via Teleconference

**DATE:** Wednesday, September 8, 2021

**CALL TO ORDER:** 6:30 p.m. by Chairman Gerbsman. Recording Secretary Wilson led the assembly in the Pledge of Allegiance.

**ROLL CALL:** Corbet-present; Evergettis-present; Gerbsman-present; Murray-present; Naso-present. Also in attendance were Chief Pomi, C-Shift, Accountant Hom, and Recording Secretary Wilson.

**APPROVAL OF PRIOR MONTH'S MINUTES:** M/S Murray/Corbet to approve the minutes of July 14, 2021.  
Roll Call Vote: Corbet-Aye; Evergettis-Abstain; Gerbsman-Aye; Murray-Aye; Naso-Aye;  
Ayes: 4 Nays: 0 Abstain: 1  
Motion passes

**PUBLIC COMMENT PERIOD:** As there were no members of the public in attendance, no comments were received.

**AGENDA ADJUSTMENTS:** None

**SPECIAL ANNOUNCEMENTS/PRESENTATIONS:**

- a. KFD/MWPA Local Mitigation Projects/Current Fuel Reduction Projects – Chief Pomi directed all to look at the 2 documents titled *Fuel Reduction Project 2021* provided in the Board packet. He stated they are vegetation projects that were completed in July and August of this year. The pictures included help illustrate some of the ways in which the MWPA, Kentfield Fire District, and Central Marin Zone Fire Agencies have come together to clear evacuation routes and complete vegetation projects. Referencing the Brushwood Lane & Vista Grande Bowl project, Chief Pomi said Kentfield Fire District was able to partner with a certified license contractor who began the work on the San Rafael side and moved on through the Kentfield side. Hazardous trees, non-native plants, and dead fuel debris were removed from the area, reducing the fire-hazardous fuel volume. Looking at page 2, you can really see the difference the work created when viewing the before and after photos. The second project was the Sir Francis Drake Dead Pine Removal Project, where there were several dead pine trees hanging over the road. Kentfield Fire District was able to partner with homeowners to cost-share the removal of the dead pines. The before and after pictures show all that was cleared, including the seven dead pine trees that will no longer impede any evacuation routes. Chief Pomi presented these two projects to report some of the great work that is being done, confirm where some of the MWPA monies are going, and to encourage the Board to distribute the documents within their communities.

**UNFINISHED BUSINESS:**

- a. Kentfield Fire District Type 3 Fire Engine – In prior discussions of purchasing a Type 3 Fire Engine, Chief Pomi said he has secured a County of Marin RFP for a Type 3 Engine. It has been approved by the Board of Supervisors and includes a clause that allows any special district to continue to proceed with Hi-Tech to spec out a Type 3 Engine. A committee within the KFD staff has formed and has started to build the ideal Engine. They were scheduled to go to the builder in August, but due to a Covid-19 outbreak, the builder had to close down and reschedule. Chief Pomi stated their goal is to hopefully bring back at least a spec proposal with cost for the October Board meeting. Director Murray asked there was certain specs the District was looking for. Chief Pomi stated they want to build something that will serve our community the best.

**KENTFIELD FIRE PROTECTION DISTRICT  
BOARD OF DIRECTORS MEETING**

**NEW BUSINESS:**

- a. GASB 75 Actuarial Report FY Ending June 30, 2021 – Chief Pomi stated the primary purpose of this report is to provide information required by GASB 75 for the District's other post-employment benefit (OPEB) liabilities. This report is then used to help guide us as we continue to fund the CalPERS Trust (CERBT), which is our OPEB account. Chief Pomi said the report is shared with the auditors and they use it to make sure the District stays on track as well. Contributing for the past 8.5 years, the District has roughly \$4.5 Million in the trust right now due to the smart investing and staying committed to funding the trust. The report helps demonstrate that the District is in a good position and has made great strides.

M/S Evergettis/Murray to approve GASB 75 Actuarial Report FY Ending June 30, 2021

**OPPORTUNITY FOR PUBLIC COMMENTS: There were no public comments made.**

Roll Call Vote: Corbet-Aye; Evergettis-Aye; Gerbsman-Aye; Murray-Aye; Naso-Aye;  
Ayes: 5 Nays: 0  
Motion passes

- b. Annual Gann Appropriations Limits Report – Chief Pomi explained that Article XIII B of the Constitution of the State of California allows the District to increase appropriations every year by either the rate of population increase or the rate of inflation. Accountant Hom has prepared a calculation report on the property tax appropriations limit for the fiscal year that just ended, 2020/21. The requirement is to bring this report to the Board and have it approved annually. Any excess in property taxes would need to be refunded to the taxpayer. Accountant Dan Hom explained that the District does not have any excess funds. According to the Property Tax Appropriations Limit spreadsheet, the adjustment for 2020/21 is at a 3.1076% increase. The appropriation limit for 2020/21 is calculation at roughly \$6.5 Million dollars. This calculation needs to be configured every year and is available to the public.
- c. **Resolution 7-2021** Determining the 2020/21 Appropriations Limit – Chief Pomi stated this resolution is the formal procedure to satisfy the report.

M/S Murray/Corbet to approve **Resolution 7-2021** Determining the 2020/21 Appropriations Limit

**OPPORTUNITY FOR PUBLIC COMMENTS: There were no public comments made.**

Roll Call Vote: Corbet-Aye; Evergettis-Aye; Gerbsman-Aye; Murray-Aye; Naso-Aye;  
Ayes: 5 Nays: 0  
Motion passes

- d. Measure G Tax Report FY 2020/21 – Similar to the Annual Gann Appropriations Limits Report, the Measure G Tax Report is also prepared and presented annually for the Board's approval. It is not filed with any government entity but it is made readily available to the public. Chief Pomi stated this report gives information on where the monies from Measure G are being spent. It identifies fund operations and maintenance expenditures. It does not include personal costs or liabilities. If approved tonight by the Board, Chief Pomi said the report will be posted on the District's website and be available at the station for public access. Chief Pomi directed all to page 7, which explains and illustrates what the District charges every year for measure G; \$.07 per square foot. The Measure G Consumer Price Index (CPI) Adjustment is shown on page 8. The District is able to increase the tax by the amount of CPI for the year but is capped at 3%. Years prior, the CPI was roughly 3% but last year in 2020, the CPI was only 1.72%. This means the District could add a 1.72% maximum increase and could charge \$.11 per square foot. As Chief Pomi further explained, there is no need to charge the public for monies the District does not need. Chief Pomi then guided everyone to page 10, figure 3, which lists the budget of revenues and expenditures charged to the Measure G Special Tax Fund. He pointed out that all the expenditure items totaled \$541,922. Page 12 provides a quick summary of the special tax

**KENTFIELD FIRE PROTECTION DISTRICT  
BOARD OF DIRECTORS MEETING**

revenues over the years; at the \$.07 per square foot, it provided revenue of \$549,925 for fiscal year 2020/21. This is a slight increase from last year due to building and remodeling, which adds to the total square footage within the District's community. The last of the report consists of the ballot text and percentages along with the District boundary map. Chief Pomi asked the Board for approval of the Measure G Tax Report 2020/21 and offered to answer any questions. No questions were asked.

M/S Naso/Evergettis to approve the Measure G Tax Report FY 2020/21

**OPPORTUNITY FOR PUBLIC COMMENTS: There were no public comments made.**

Roll Call Vote: Corbet-Aye; Evergettis-Aye; Gerbsman-Aye; Murray-Aye; Naso-Aye;  
Ayes: 5 Nays:0

**CHIEF'S REPORT:**

- a. Pancake Breakfast/Open House – This year the Fire District will have to cancel the event due to the impacts of COVID-19 and guidelines from public health officials. As disappointing as it is, Chief Pomi stated that we do understand the importance of keeping everyone safe as well
- b. Operations/Significant Events – Our OES, Type 6 Engine went in service on July 8<sup>th</sup> and was sent to Oregon. Since then, it was deployed straight to Montana and back to California, where it is still being assigned to the Dixie Incident. Today marks 63 straight consecutive days that the OES Engine has been out of the station working. We've gone through 5 crew rotations and this is the time we really have to appreciate our staff. They are doing a lot of great work and getting a lot of experience. Chief Pomi thanked our staff for stepping up and fulfilling the requests by Cal OES. BC Glenn has been assigned as a single resource to the Beckwourth, the River, and the Dixie fire incident. Deputy Fire Marshal Pasero is currently at the Caldor fire again, and has also been to the River incident. He has been assisting CalFIRE Incident Management Team 6. The 5-year average for acres burned annually in California is about 900,000 at this time of year. In 2021, we are well over that average with over 2 million acres burned as of September 8<sup>th</sup>
- c. Business/Finance/Administration – Completed our Interim audit for fiscal year end 2020/21 and starting September 13, the District will start the Final Audit. Accountant Dan Hom, Jena, and Chief Pomi have spent a tremendous amount of time on the audit as it is being done remotely again this year which has its own challenges
- d. Nextiva Phone System – The District is upgrading our phone system because the current Cisco phone system is out of date and not supported any longer. When we approved the budget, the District approved the funds to upgrade the phone system.
- e. COVID Vaccination requirements – In August, the Marin County Health Department imposed a mask mandate for inside buildings and added a new health order for all health responders to provide proof of vaccination or provide weekly tests and masking for all. We are working through that documentation now to make sure we are completely covered. Happy to announce that Kentfield Fire District is 100% vaccinated.
- f. Up-coming Chipper Days – Next Monday, September 13, the Chipper Days program will be in the Kent Woodlands. A lot of great work has been this year through this program.



**KENTFIELD FIRE PROTECTION DISTRICT  
BOARD OF DIRECTORS MEETING**

**DIRECTOR MATTERS:** Directors provided the following information regarding their activities:

**Director Naso** – There was no meeting for MERA in the month of August, so there is nothing to report at this time but there will be a meeting in September.

**CORRESPONDENCE:** Were reviewed.

**DISTRICT OPERATIONS:** July and August Incident Logs and Overtime Reports were reviewed.

**APPROVAL OF WARRANTS:**

M/S Evergettis/Gerbsman to approve July warrant 805303784 to and including 805303832 for \$1,056,093.61

**OPPORTUNITY FOR PUBLIC COMMENTS: There were no public comments made.**

Roll Call Vote: Corbet-Aye; Evergettis-Aye; Gerbsman-Aye; Murray-Aye; Naso-Aye  
Ayes: 5; Noes: 0; Absent: 0  
Motion Passes

M/S Evergettis/Gerbsman to approve August warrant 805303833 to and including 805303917 for \$866,762.50

**OPPORTUNITY FOR PUBLIC COMMENTS: There were no public comments made.**

Roll Call Vote: Corbet-Aye; Evergettis-Aye; Gerbsman-Aye; Murray-Aye; Naso-Aye  
Ayes: 5; Noes: 0; Absent: 0  
Motion Passes

**NEXT MEETING:** The next regular meeting will be held on October 13, 2021.

**ADDITIONAL ACTIONS:** Director Gerbsman asked Chief Pomi to read the Firefighter's prayer:

When I am called to duty, God wherever flames may rage,  
give me strength to save a life, whatever be its age.

Help me to embrace a little child before it's too late,  
or save an older person from the horror of that fate.

Enable me to be alert to hear the weakest shout,  
and quickly and efficiently to put the fire out.

I want to fill my calling and to give the best in me,  
to guard my neighbor and protect his property.

And if according to your will I have to lose my life,  
bless with your protecting hand my loving family from strife.  
Amen

**ADJOURNMENT:** M/S Gerbsman/Corbet to adjourn this meeting at 7:20 p.m. All ayes.

Respectfully submitted,

Jena Wilson  
Recording Secretary



# Kentfield Fire Protection District

Mark Pomi  
Fire Chief

1004 Sir Francis Drake Boulevard  
Kentfield, CA 94904

Phone : (415) 453-7464  
Fax : (415) 453-4578



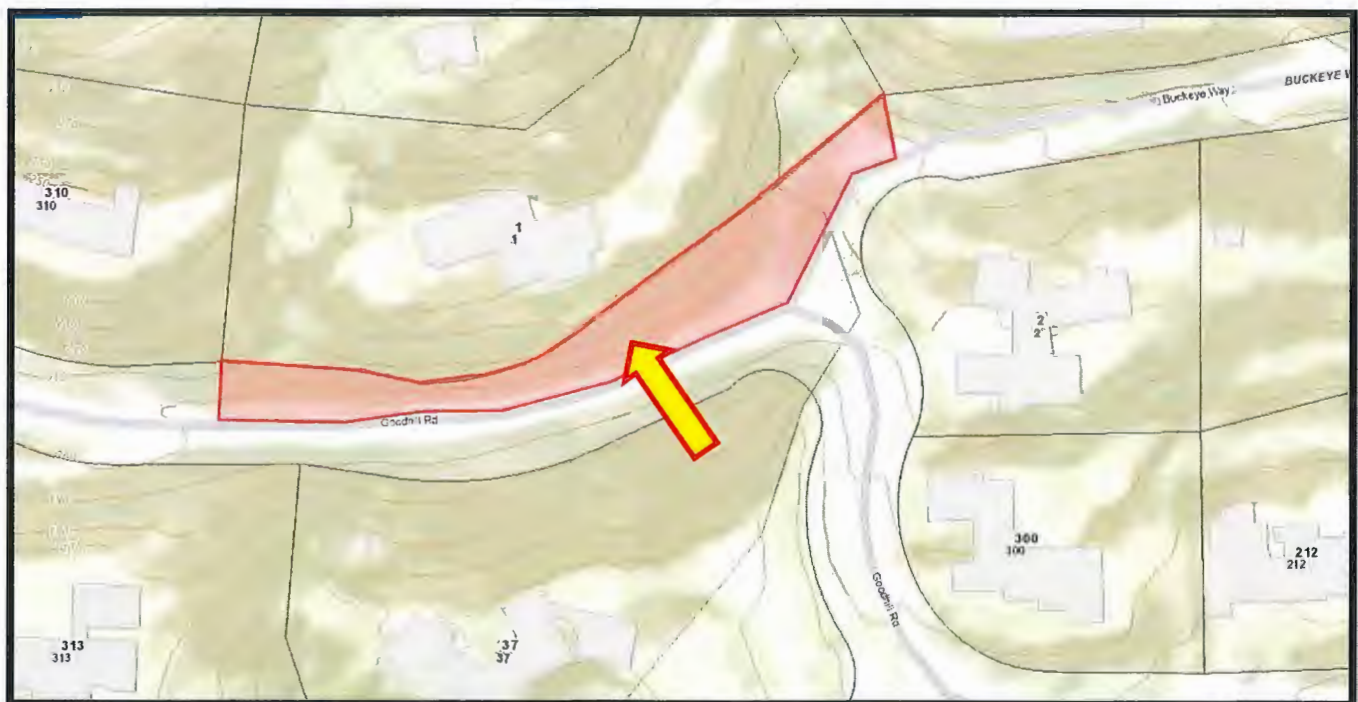
## Fuel Reduction Project 2021

### *Buckeye and Goodhill Roadside Fuel Reduction*

In September 2021, the Kentfield Fire District, in cooperation with the Marin Wildfire Prevention Authority (MWPA) initiated a fuel reduction project for the removal of dense combustible vegetation along the roadside on Goodhill Road at Buckeye Way. The frontage area, totaling over .35 acres, includes oak, buckeye and bay trees, as well as mature stands of brooms species, and other fire hazardous vegetation that posed an immediate risk to structures, and vehicle traffic along the Goodhill Road corridor.

The focus of the project was to remove fire hazardous vegetation, remove ladder fuels and prune mature trees to provide defensible space while reducing total fuel volume.

The Goodhill Road corridor serves as a key emergency evacuation and access route for the Kent Woodlands Community. MWPA Local funding was utilized by the Kentfield Fire District to remove the hazard vegetation and reduce roadside ignition risks while enhancing emergency access and egress for a combined community benefit.



Fuel Reduction Project 2021 – Buckeye and Goodhill



Fuel Reduction Project 2021 – Buckeye and Goodhill

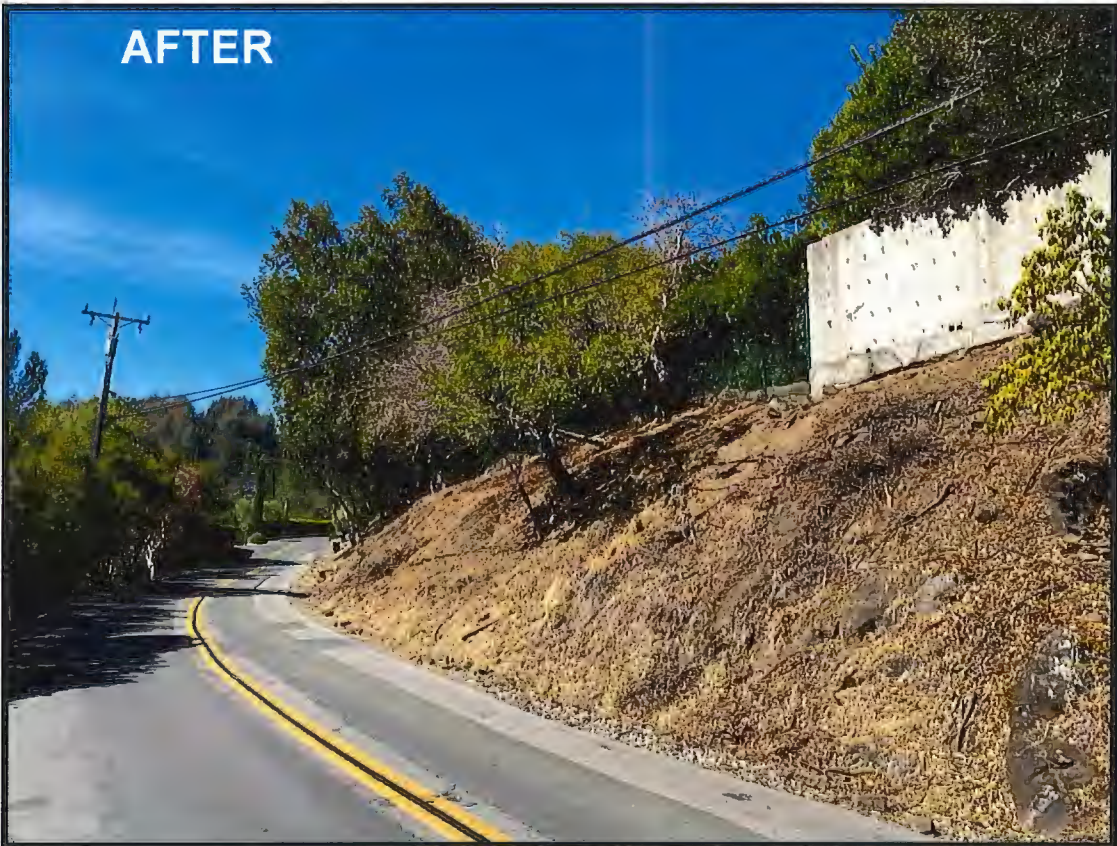


Fuel Reduction Project 2021 – Buckeye and Goodhill

**BEFORE**



**AFTER**





# Kentfield Fire Protection District

Mark Pomi  
Fire Chief

1004 Sir Francis Drake Boulevard  
Kentfield, CA 94904

Phone : (415) 453-7464  
Fax : (415) 453-4578



## Fuel Reduction Project 2021

### *Crown Road Roadside Fuel Reduction*

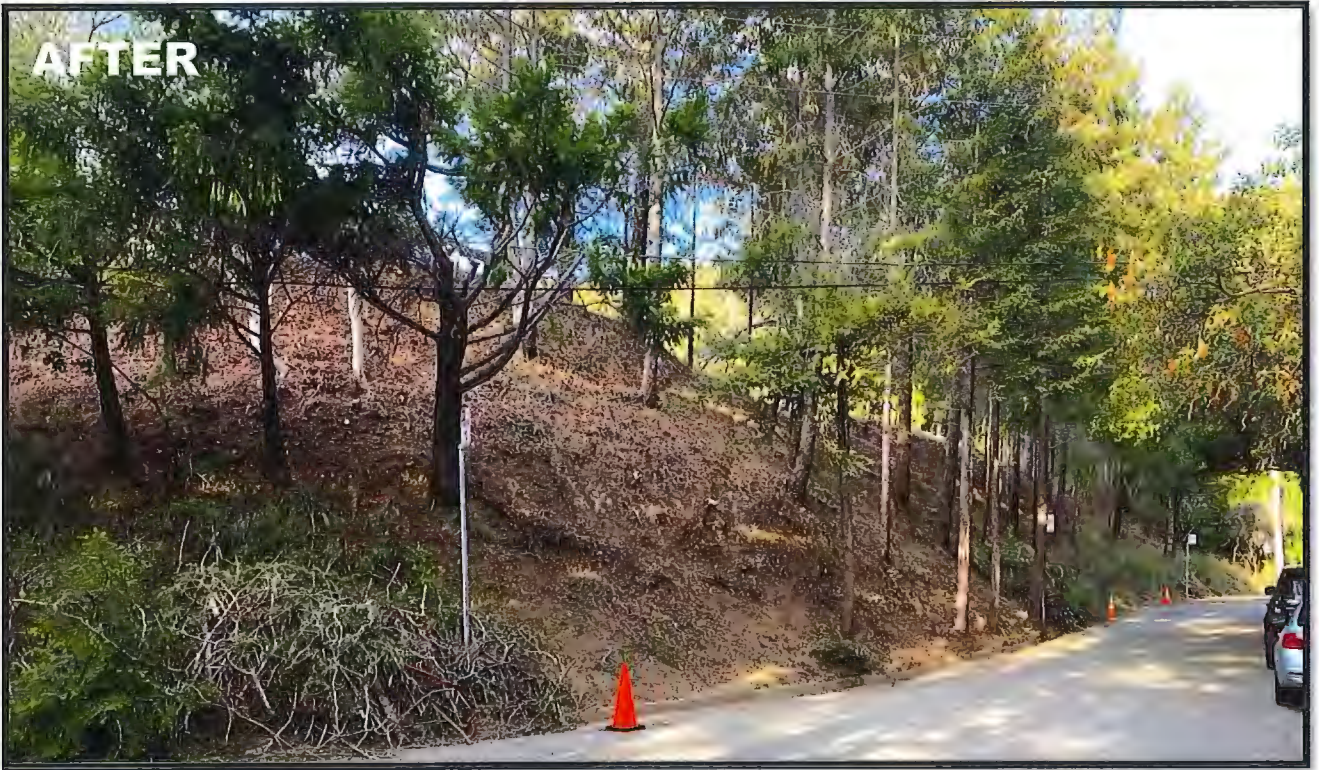
In October 2021, the Kentfield Fire District, in cooperation with the Marin Wildfire Prevention Authority (MWPA) initiated a fuel reduction project for the removal of dense combustible vegetation along the roadside on the 400 block of Crown Road near the entry of the Southern Marin Line Fire Road access gate. The roadside area, totaling over .37 acres, includes mature redwood and pine trees, as well as mature stands of brooms species, and other fire hazardous vegetation that posed an immediate risk to structures, and vehicle traffic along the Crown Road corridor.

The focus of the project was to remove fire hazardous vegetation, remove ladder fuels and prune mature trees to provide defensible space while reducing total fuel volume.

The Crown Road corridor serves as a key emergency evacuation and access route for the Kent Woodlands Community and Fire District Access to the Fire road system. MWPA Local funding was utilized by the Kentfield Fire District to remove the hazard vegetation and reduce roadside ignition risks while enhancing emergency access and egress for a combined community benefit.









**AFTER**





# Kentfield Fire Protection District

Mark Pomi  
Fire Chief

1004 Sir Francis Drake Boulevard  
Kentfield, CA 94904

Phone : (415) 453-7464  
Fax : (415) 453-4578



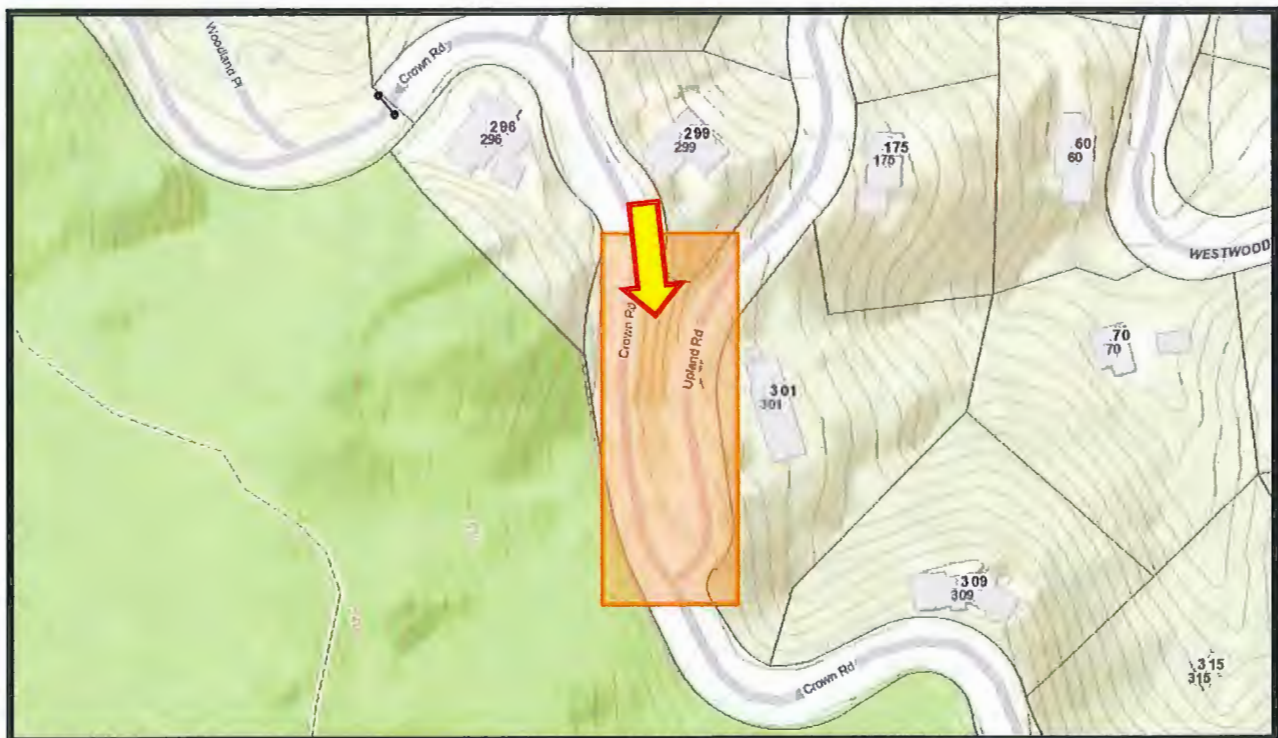
## Fuel Reduction Project 2021

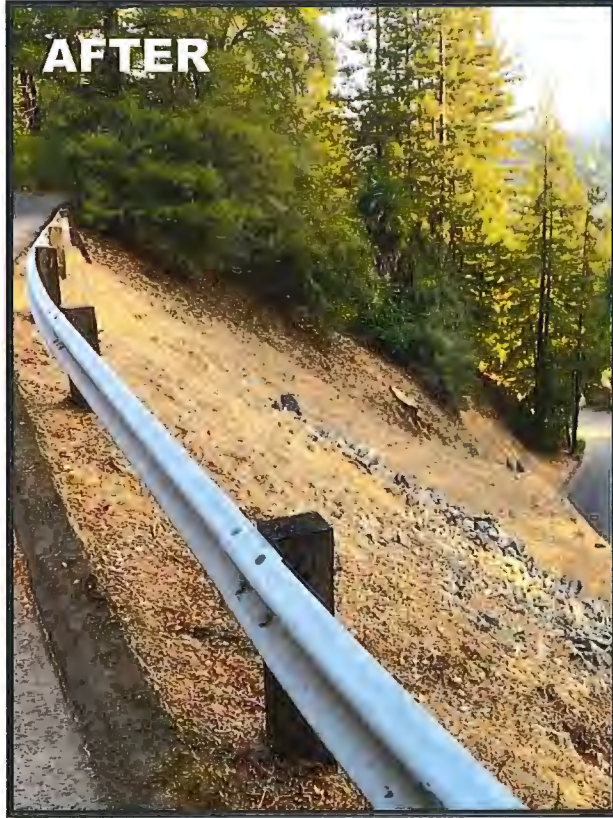
### *Upland at Crown Roadside Fuel Reduction*

In October 2021, the Kentfield Fire District, in cooperation with the Marin Wildfire Prevention Authority (MWPA) initiated a fuel reduction project for the removal of dense combustible vegetation along the roadside on Upland Road at Crown Road. The roadside intersection area, totaling over .31 acres, includes mature redwood trees, as well as mature stands of brooms species, and other fire hazardous vegetation that posed an immediate emergency access and egress traffic along the Crown Road corridor.

The focus of the project was to remove fire hazardous vegetation, remove ladder fuels and prune mature trees to provide defensible space while reducing total fuel volume.

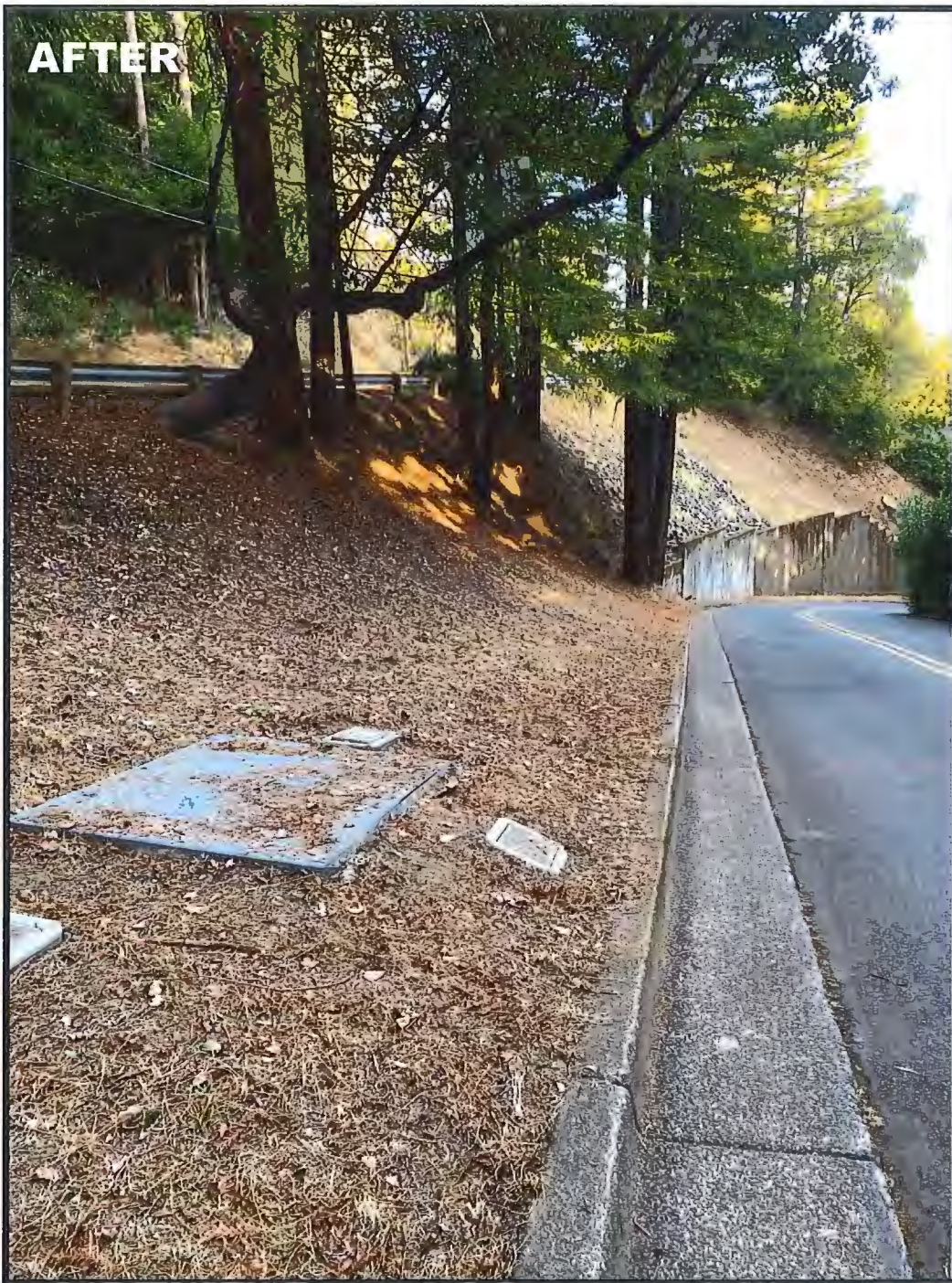
The Crown Road corridor serves as a key emergency evacuation and access route for the Kent Woodlands Community. MWPA Local funding was utilized by the Kentfield Fire District to remove the hazard vegetation and reduce roadside ignition risks while enhancing emergency access and egress for a combined community benefit.







**AFTER**



# **Kentfield Fire Protection District**

## **Type 3 Fire Engine Proposal**

- **Background**
- **Benefits**
- **Questions**

- ACCESS
- 4 WHEEL DRIVE
- SHORT WHEELBASE
- MANEUVERABILITY
- MOBILE ATTACK

## Benefits



- ACCESS
- 4 WHEEL DRIVE





# SHORT WHEELBASE MANEUVERABILITY

Brushwood Lane



Murray Ave



• **MOBILE ATTACK**



# Benefits

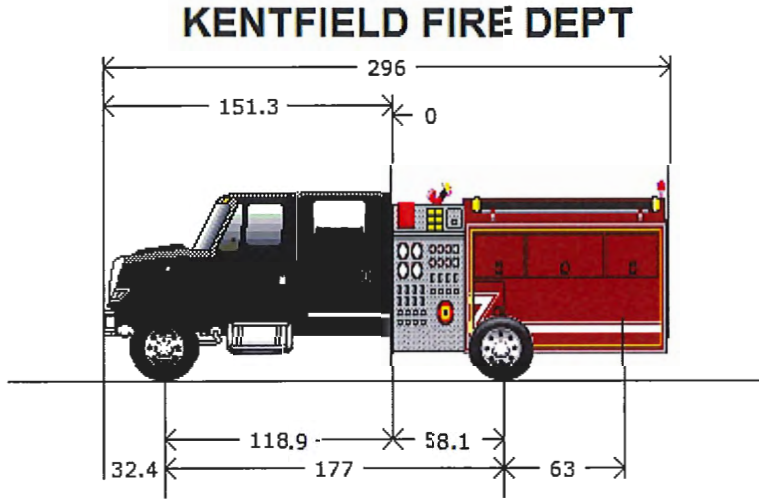
- **PRE POSITION / RED FLAG CONDITIONS**
- **MUTUAL AID**
  - **MARIN COUNTY MATRIX**
- **SAFETY**
  - **CREW FAMILIARITY**
  - **COMMUNICATION**



**Prepared For:**  
HI-TECH ESV, INC.  
BRIAN RUTHMAN  
PO Box 1616  
Oakdale, CA 95361-1616  
(209)847 - 3042  
Reference ID: KENTFIELD FIRE

**Presented By:**  
INTERSTATE TRUCK CENTER  
Bill Dugo  
2110 S Sinclair Ave  
STOCKTON CA 95215 -  
(209)944-5821

Thank you for the opportunity to provide you with the following quotation on a new International truck. I am sure the following detailed specification will meet your operational requirements, and I look forward to serving your business needs.



**Model Profile**  
**2022 HV507 SFA (HV507)**

**AXLE CONFIG:** 4X4  
**APPLICATION:** Tank (Emergency)  
**MISSION:** Requested GVWR: 35000. Calc. GVWR: 35000. Calc. GCWR: 80000  
 Calc. Start / Grade Ability: 32.68% / 3.62% @ 55 MPH  
 Calc. Geared Speed: 80.3 MPH

**DIMENSION:** Wheelbase: 177.00, CA: 58.10, Axle to Frame: 63.00  
**ENGINE, DIESEL:** {Cummins L9 360} EPA 2021, 360HP @ 2200 RPM, 1150 lb-ft Torque @ 1200 RPM, 2200 RPM Governed Speed, 359 Peak HP (Max)  
**TRANSMISSION, AUTOMATIC:** {Allison 3000 EVS} 5th Generation Controls, Close Ratio, 6-Speed with Double Overdrive, with PTO Provision, Less Retarder, Includes Oil Level Sensor  
**CLUTCH:** Omit Item (Clutch & Control)  
**AXLE, FRONT DRIVING:** {Meritor MX-12-120 EVO} Single Reduction, 12,000-lb Capacity, with Hub Piloted Wheel Mounting  
**AXLE, REAR, SINGLE:** {Dana Spicer S23-190} Single Reduction, Hypoid Gearing, 23,000-lb Capacity, R Wheel Ends Gear Ratio: 5.25

**CAB:** Conventional 6-Man Crew Cab  
**TIRE, FRONT:** (2) 12R22.5 Load Range H G622 RSD (GOODYEAR), 482 rev/mile, 75 MPH, Drive  
**TIRE, REAR:** (5) 12R22.5 Load Range H G622 RSD (GOODYEAR), 482 rev/mile, 75 MPH, Drive  
**SUSPENSION, REAR, SINGLE:** 31,000-lb Capacity, Vari-Rate Springs, with 4500-lb Capacity Auxiliary Multileaf Springs  
**PAINT:** Cab schematic 21GWK  
 Location 1: 2972, Flna 32130 Red (Custom)  
 Location 2: 8A57, Flna93101 Gray Met (Custom)  
 Chassis schematic N/A

Description

Base Chassis, Model HV507 SFA with 177.00 Wheelbase, 58.10 CA, and 63.00 Axle to Frame.

AXLE CONFIGURATION {Navistar} 4x4

Notes

: Pricing may change if axle configuration is changed.

FRAME RAILS Heat Treated Alloy Steel (120,000 PSI Yield); 10.250" x 3.610" x 0.375" (260.4mm x 91.7mm x 9.5mm); 456.0" (11582mm)  
Maximum OAL

BUMPER, FRONT Swept Back, Steel, Heavy Duty

FRAME EXTENSION, FRONT Integral; 20" In Front of Grille

WHEELBASE RANGE 148" (375cm) Through and Including 179" (455cm)

AXLE, FRONT DRIVING {Meritor MX-12-120 EVO} Single Reduction, 12,000-lb Capacity, with Hub Piloted Wheel Mounting

Notes

: Axle Lead Time is 90 Days

SUSPENSION, FRONT, SPRING Parabolic Taper Leaf, Shackle Type, 12,000-lb Capacity, with Shock Absorbers

BRAKE SYSTEM, AIR Dual System for Straight Truck Applications

Includes

: BRAKE LINES Color and Size Coded Nylon

: DRAIN VALVE Twist-Type

: GAUGE, AIR PRESSURE (2) Air 1 and Air 2 Gauges; Located in Instrument Cluster

: PARKING BRAKE CONTROL Yellow Knob, Located on Instrument Panel

: PARKING BRAKE VALVE For Truck

: QUICK RELEASE VALVE On Rear Axle for Spring Brake Release: 1 for 4x2, 2 for 6x4

: SPRING BRAKE MODULATOR VALVE R-7 for 4x2, SR-7 with relay valve for 6x4/8x6

AIR BRAKE ABS {Bendix AntiLock Brake System} 4-Channel (4 Sensor/4 Modulator) Full Vehicle Wheel Control System, with Automatic Traction Control

AIR DRYER {Bendix AD-IP} with Heater

BRAKE CHAMBERS, POSITION Relocated To Rear Of Rear Axle For Maximum Ground Clearance

BRAKE CHAMBERS, FRONT AXLE {MGM} 20 SqIn

BRAKE CHAMBERS, REAR AXLE {Bendix EverSure} 30/30 SqIn Spring Brake

SLACK ADJUSTERS, FRONT {Haldex} Automatic

SLACK ADJUSTERS, REAR {Gunite} Automatic

AIR COMPRESSOR {Cummins} 18.7 CFM

AIR TANK LOCATION (2) Mounted Left Side BOC Under Battery Box

AIR DRYER LOCATION Mounted Inside Left Rail, Behind Transfer Case Mounting

DUST SHIELDS, FRONT BRAKE for Air Cam Brakes

DRAIN VALVE (3) Petcocks, for Air Tanks

DUST SHIELDS, REAR BRAKE for Air Cam Brakes

BRAKES, FRONT {Meritor 16.5X5 Q-PLUS CAST} Air S-Cam Type, Cast Spider, Fabricated Shoe, Double Anchor Pin, Size 16.5" X 5", 14,700-lb Capacity

BRAKES, REAR {Meritor 16.5X7 Q-PLUS CAST} Air S-Cam Type, Cast Spider, Fabricated Shoe, Double Anchor Pin, Size 16.5" X 7", 23,000-lb Capacity per Axle

Description

STEERING COLUMN Tilting and Telescoping

STEERING WHEEL 4-Spoke; 18" Dia., Black

STEERING GEAR {Sheppard M100} Power

DRIVELINE SYSTEM {Dana Spicer} SPL170 Main Driveline, 1710 Driveline to Transfer Case, SPL140 Driveline to Front Axle, for 4x4

AFTERTREATMENT COVER Steel, Black

EXHAUST SYSTEM Horizontal Aftertreatment System, Frame Mounted Right Side Under Cab, for Single Vertical Tail Pipe, Frame Mounted Right Side Back of Cab, for All-Wheel Drive

ENGINE COMPRESSION BRAKE {Jacobs} for Cummins ISL/L9 Engines; with Selector Switch and On/Off Switch

EXHAUST HEIGHT 10'

MUFFLER/TAIL PIPE GUARD (1) Aluminum

TAIL PIPE (1) Straight Type

SWITCH, FOR EXHAUST 3 Position, Momentary, Lighted Momentary, ON/CANCEL, Center Stable, INHIBIT REGEN, Mounted in IP Inhibits Diesel Particulate Filter Regeneration When Switch is Moved to ON While Engine is Running, Resets When Ignition is Turned OFF

ELECTRICAL SYSTEM 12-Volt, Standard Equipment

Includes

: DATA LINK CONNECTOR For Vehicle Programming and Diagnostics In Cab

: HAZARD SWITCH Push On/Push Off, Located on Instrument Panel to Right of Steering Wheel

: HEADLIGHT DIMMER SWITCH Integral with Turn Signal Lever

: PARKING LIGHT Integral with Front Turn Signal and Rear Tail Light

: STARTER SWITCH Electric, Key Operated

: STOP, TURN, TAIL & B/U LIGHTS Dual, Rear, Combination with Reflector

: TURN SIGNAL SWITCH Self-Cancelling for Trucks, Manual Cancelling for Tractors, with Lane Change Feature

: WINDSHIELD WIPER SWITCH 2-Speed with Wash and Intermittent Feature (5 Pre-Set Delays), Integral with Turn Signal Lever

: WINDSHIELD WIPERS Single Motor, Electric, Cowl Mounted

: WIRING, CHASSIS Color Coded and Continuously Numbered

CIGAR LIGHTER Includes Ash Cup

IGNITION SWITCH Keyless

POWER SOURCE Cigar Type Receptacle without Plug and Cord

ALTERNATOR {Leece-Neville BLP4006HN} Brushless, 12 Volt, 325 Amp Capacity, Pad Mount, with Remote Sense

BODY BUILDER WIRING Back of Day Cab at Left Frame or Under Sleeper, Extended or Crew Cab at Left Frame; Includes Sealed Connectors for Tail/Amber Turn/Marker/ Backup/Accessory Power/Ground and Sealed Connector for Stop/Turn

BATTERY SYSTEM {Fleetrite} Maintenance-Free, (3) 12-Volt 1980CCA Total, Top Threaded Stud

SPEAKERS (2) 6.5" Dual Cone Mounted in Both Doors, (2) 5.25" Dual Cone Mounted in Both B-Pillars

ANTENNA Shark Fin, Roof Mounted

RADIO AM/FM/WB/Clock/Bluetooth/USB Input/Auxiliary Input

BACK-UP ALARM Electric, 102 dBA

DATA RECORDER Includes Display Mounted in Overhead Console

HORN, ELECTRIC Disc Style

STOP-LIGHT WIRING MODIFIED Stop-Lights Turned on When Engine Compression Brake, Exhaust Brake or Retarder is Activated

BATTERY BOX Steel, with Plastic Cover, 30" Wide, 2-4 Battery Capacity, Mounted Left Side Back of Fuel Tank

Description

WINDSHIELD WIPER SPD CONTROL Force Wipers to Slowest Intermittent Speed When Park Brake Set and Wipers Left on for a Predetermined Time

CLEARANCE/MARKER LIGHTS (5) {Truck Lite} Amber LED Lights, Flush Mounted on Cab or Sunshade

TEST EXTERIOR LIGHTS Pre-Trip Inspection will Cycle all Exterior Lamps Except Back-up Lights

HEADLIGHTS ON WWIPERS Headlights Will Automatically Turn on if Windshield Wipers are turned on

STARTING MOTOR {Delco Remy 39MT} 12 Volt, Gear Reduced, with Thermal Over-Crank Protection

INDICATOR, LOW COOLANT LEVEL with Audible Alarm

CIRCUIT BREAKERS Manual-Reset (Main Panel) SAE Type III with Trip Indicators, Replaces All Fuses

TURN SIGNALS, FRONT Includes LED Side Turn Lights Mounted on Fender

BATTERY DISCONNECT SWITCH 300 Amp, Disconnects Charging Circuits, Locks with Padlock, Cab Mounted

SWITCH, AIR HORN, PASSENGER Fire Truck Application; Momentary Switch Located in Instrument Panel Close to Passenger, Driver Also To Activate Switch with Lanyard

HEADLIGHTS Halogen

FENDER EXTENSIONS Omit

LOGOS EXTERIOR Model Badges

LOGOS EXTERIOR, ENGINE Badges

INSULATION, UNDER HOOD for Sound Abatement

GRILLE Stationary, Chrome

INSULATION, SPLASH PANELS for Sound Abatement

BUG SCREEN Mounted Behind Grille

FRONT END Tilting, Fiberglass, with Three Piece Construction, for WorkStar/HV

GRILLE EMBER SCREEN Mounted to Grille and Cowl Tray to Keep Hot Embers out of Engine and HVAC Air Intake System

TOOL KIT Rim Wrench and Handle Only

PAINT TYPE Base Coat/Clear Coat, 1-2 Tone

PAINT CLASS Single Custom Color

PROMOTIONAL PACKAGE Government Silver Package

KEYS - ALL ALIKE, ADDITIONAL 2 Keys

KEYS - ALL ALIKE, ID I-1003 Compatible with Z-001

CLUTCH Omit Item (Clutch & Control)

ANTI-FREEZE Red, Extended Life Coolant; To -40 Degrees F/ -40 Degrees C, Freeze Protection

ENGINE, DIESEL {Cummins L9 360} EPA 2021, 360HP @ 2200 RPM, 1150 lb-ft Torque @ 1200 RPM, 2200 RPM Governed Speed, 359 Peak HP (Max)

FAN DRIVE {Horton Drivemaster} Two-Speed Type, Direct Drive, with Residual Torque Device for Disengaged Fan Speed

Includes

: FAN Nylon

RADIATOR Aluminum, Cross Flow, Front to Back System, 1228 SqIn, with 1167 SqIn Charge Air Cooler, Includes In-Tank Oil Cooler

Includes

Description

: DEAERATION SYSTEM with Surge Tank  
: HOSE CLAMPS, RADIATOR HOSES Gates Shrink Band Type; Thermoplastic Coolant Hose Clamps  
: RADIATOR HOSES Premium, Rubber

AIR CLEANER Dual Element

EMISSION, CALENDAR YEAR {Cummins L9} EPA, OBD and GHG Certified for Calendar Year 2021

THROTTLE, HAND CONTROL Engine Speed Control; Electronic, Stationary, Variable Speed; Mounted on Steering Wheel

FAN OVERRIDE Manual; with Electric Switch on Instrument Panel, (Fan On with Switch On)

HOSE CLAMPS, RADIATOR HOSES {R.G. Ray Mini Flex Seal} Coil Spring/"T"-Bolt Constant Torque Type, for Radiator Hoses over 1" I.D.

ENGINE WATER COOLER {Sen-Dure} Auxiliary, For Use with Fire Trucks

CARB IDLE COMPLIANCE Engine Shutdown System Exempt Vehicles, Complies with California Clean Air Regulations

CARB EMISSION WARR COMPLIANCE for Cummins L9 Engines

ENGINE CONTROL, REMOTE MOUNTED Provision for; Includes Wiring for Body Builder Installation of PTO Controls and Starter Lockout, with Ignition Switch Control, for Cummins B6.7 and L9 Engines

TRANSMISSION, AUTOMATIC {Allison 3000 EVS} 5th Generation Controls, Close Ratio, 6-Speed with Double Overdrive, with PTO Provision, Less Retarder, Includes Oil Level Sensor

TRANSFER CASE {Meritor MTC-4210} 2-Speed, 10,000 lb-ft Torque Rating, Less PTO Provision, Electric Over Air Control, with Lube Pump

OIL COOLER, AUTO TRANSMISSION {Modine} Water to Oil Type

TRANSFER CASE LUBE {EmGard 50W} Synthetic; 1 thru 14.99 Pints

TRANSMISSION SHIFT CONTROL Column Mounted Stalk Shifter, Not for Use with Allison 1000 & 2000 Series Transmission

OIL COOLER, TRANSFER CASE with Oil Coolant Lines Routed to Oil Cooler

TRANSMISSION OIL Synthetic; 29 thru 42 Pints

ALLISON SPARE INPUT/OUTPUT for Emergency Vehicle Series (EVS), Fire/Pumper, Tank, Aerial/Ladder, Package Number 198

SHIFT CONTROL PARAMETERS {Allison} 3000 or 4000 Series Transmissions, Performance Programming

PTO LOCATION Customer Intends to Install PTO at Left Side of Transmission

AXLE, REAR, SINGLE {Dana Spicer S23-190} Single Reduction, Hypoid Gearing, 23,000-lb Capacity, R Wheel Ends . Gear Ratio: 5.25

SUSPENSION, REAR, SINGLE 31,000-lb Capacity, Vari-Rate Springs, with 4500-lb Capacity Auxiliary Multileaf Springs

FUEL/WATER SEPARATOR {Racor 400 Series} with Primer Pump, Includes Water-in-Fuel Sensor, Mounted on Engine

FUEL TANK Top Draw, Non-Polished Aluminum, D-Style, 19" Tank Depth, 50 US Gal (189L), Mounted Left Side, Under Cab

DEF TANK 7 US Gal (26L) Capacity, Frame Mounted Outside Left Rail, Under Cab

CAB Conventional 6-Man Crew Cab

SEAT, PASSENGER Hardware & Seatbelt only, Omit Seat

HEATER HOSES Silicone

AIR CONDITIONER with Integral Heater and Defroster

GAUGE CLUSTER Base Level; English with English Electronic Speedometer

Includes



Description

: GAUGE CLUSTER DISPLAY: Base Level (3" Monochromatic Display), Premium Level (5" LCD Color Display); Odometer, Voltmeter, Diagnostic Messages, Gear Indicator, Trip Odometer, Total Engine Hours, Trip Hours, MPG, Distance to Empty/Refill for  
: GAUGE CLUSTER Speedometer, Tachometer, Engine Coolant Temp, Fuel Gauge, DEF Gauge, Oil Pressure Gauge, Primary and Secondary Air Pressure  
: WARNING SYSTEM Low Fuel, Low DEF, Low Oil Pressure, High Engine Coolant Temp, Low Battery Voltage (Visual and Audible), Low Air Pressure (Primary and Secondary)

SEATBELT WARNING PREWIRE Includes Seat Belt Switches and Seat Sensors for all Belted Positions in the Cab and a Harness Routed to the Center of the Dash for the Aftermarket Installation of the Data Recorder and Seatbelt Indicator Systems, for 4 to 6 Seat Belts

GAUGE, OIL TEMP, AUTO TRANS for Allison Transmission

GAUGE, AIR CLEANER RESTRICTION {Filter-Minder} with Black Bezel, Mounted in Instrument Panel

IP CLUSTER DISPLAY On Board Diagnostics Display of Fault Codes in Gauge Cluster

SEAT, DRIVER {National 2000} Air Suspension, High Back with Integral Headrest, Vinyl, Isolator, 1 Chamber Lumbar, with 2 Position Front Cushion Adjust, -3 to +14 Degree Angle Back Adjust

SEAT, REAR BENCH; Hardware & Seatbelt only, Omit Seat

GRAB HANDLE, EXTERIOR (2) Chrome, Towel Bar Type, with Anti-Slip Rubber Inserts, for Cab Entry Mounted Left and Right Side at B-Pillar

MIRRORS (2) Aero Pedestal, Power Adjust, Heated, Turn Signals, Bright Heads, Black Arms, 6.5" x 14" Flat Glass, Includes 6.5" x 6" Convex Mirrors, for 102" Load Width

Notes

: Mirror Dimensions are Rounded to the Nearest 0.5"

SEAT BELT All Red; 4 to 6

CAB INTERIOR TRIM Diamond, for Crew Cab

Includes

: CONSOLE, OVERHEAD Molded Plastic with Dual Storage Pockets, Retainer Nets and CB Radio Pocket; Located Above Driver and Passenger

: DOME LIGHT, CAB Door Activated and Push On-Off at Light Lens, Timed Theater Dimming, Reading Lights; Integral to Overhead Console, Center Mounted

: SUN VISOR (3) Padded Vinyl; 2 Moveable (Front-to-Side) Primary Visors, Driver Side with Vanity Mirror and Toll Ticket Strap, plus 1 Auxiliary Visor (Front Only), Driver Side

HOSE CLAMPS, HEATER HOSE {Breeze} Belleville Washer Type

WINDOW, POWER (4) And Power Door Locks, Front and Rear Doors, Left and Right, Includes Express Down Feature

CAB REAR SUSPENSION Air Bag Type

CAB DOOR LOCKS Power, Driver Side Only; Non-Locking When Door Open

INSTRUMENT PANEL Flat Panel

COWL TRAY LID

ACCESS, CAB Steel, Driver & Passenger Sides, Two Steps per Door, for use with Crew Cab

WHEEL, SPARE, DISC {Accuride 42644} 22.5x8.25 Rims, Extra Polish Aluminum, 10-Stud, 285.75mm BC, Hub-Piloted

WHEELS, FRONT {Accuride 42644} DISC; 22.5x8.25 Rims, Extra Polish Aluminum, 10-Stud, 285.75mm BC, Hub-Piloted, Flanged Nut, with Steel Hubs

WHEELS, REAR {Accuride 42644} DUAL DISC; 22.5x8.25 Rims, Extra Polish Aluminum, 10-Stud, 285.75mm BC, Hub-Piloted, Flanged Nut, with Steel Hubs

TIRE, SPARE Equal to Model Standard

Description

PAINT HOOD, CONVENTIONAL CAB Solid Color for 2, 3, or 4-Tone Special Schematics

PAINT, CAB Two-Tone, with 1-2 Breaks on Cab.

BDY INTG, REMOTE POWER MODULE (2) Mounted Inside Cab Behind Driver Seat, Up to 6 Outputs & 6 Inputs Each, Max 20 amp per Channel, Max 80 amp Total; Includes 2 Switch Packs with Latched Switches

BDY INTG, PTO ACCOMMODATION for (3) Latched Rocker Switches, (1) PTO Switch, (2) Generic Switches to Control (3) 30 amp relays, with Programmable Interlocks, for Body Builder Hook up in the Engine Compartment Left Side, Recommended for Automatic Transmissions

(2) TIRE, FRONT 12R22.5 Load Range H G622 RSD (GOODYEAR), 482 rev/mile, 75 MPH, Drive

(5) TIRE, REAR 12R22.5 Load Range H G622 RSD (GOODYEAR), 482 rev/mile, 75 MPH, Drive

Cab schematic 21GWK

Location 1: 2972, Flna 32130 Red (Custom)

Location 2: 8A57, Flna93101 Gray Met (Custom)

Chassis schematic N/A

**Services Section:**

WARRANTY Standard for HV507, HV50B, HV607 Models, Effective with Vehicles Built July 1, 2017 or Later, CTS-2025A

FURNISH AND INSTALL STEEL BRAIDED FUEL LINE

HEAT WRAP ALL LINES TO END OF FRAME AND WRAP ALL AIR LINES TO TANKS. AIR AND ELECTRICAL

REPLACE BRAKE HOSE TO BRAKE CHAMBERS WITH STEEL BRAIDED LINES FRONT AND REAR

CHELSEA HOT SHIFT PTO MODEL 277 @ 129%

INSTALL OPTIONAL FRONT PARKING BRAKE/INTERLOCKED WITH MAIN PARKING BRAKE

2-CHROME EXTERIOR GRAB HANDLES

FURNISH AND INSTALL H.O. BOSTROM SENTINEL SEATS FRONT & REAR IN DRIVER & PASSENGER POSITIONS GREY/BLACK DURAWEAR MATERIAL ARM REST

TINT ALL WINDOWS TO HAVE 3M CERAMIC BARRIER TINT AND DARK TINT

FURNISH AND INSTALL DYNALINER ON FLOOR OF CAB

FURNISH AND INSTLL RED DOT MODEL R-8545-16P AUXILIARY AC/HEATER ON BACK WALL BETWEEN REAR SEATS. INCLUDES LOUVERED VENTS AND CONTROLS, FRESH AIR INTAKE NOT INSTALLED. IT WILL BE FOR RECIRCULATION OF HEAT/COOLING ONLY. TIES INTO FACTORY SYSTEM,

REMOVE FACTORY 50 GALLON "D" STYLE FUEL TANK AND REPLACE IT WITH A 70 GALLON "D" STYLE TANK. TANK WILL SIT BACK 5" FROM THE 50 GALLON TANK.

FURNISH AND INSTALL HI VIZ MODEL FT7RD-HL-KIT HEADLIGHTS

2- REMOTE POWER MODUELS WITH RESISTORS AND CHAISS WIRING

2588909C95 RPM

3559775C1 RESISTOR

2585423C91 KIT

3930690 HARNESS

DLB SUBSCRIPTION 1 YEAR


Mark Pomi - Chief

# KENTFIELD FIRE PROTECTION DISTRICT

Phone (415) 453-7464  
Fax (415) 453-4578

1004 SIR FRANCIS DRAKE BOULEVARD  
KENTFIELD CA. 94904

---

**TO:** Board of Directors  
**FROM:** Mark Pomi, Fire Chief   
**SUBJECT:** Kentfield Fire District Type 3 Engine Purchase proposal  
**DATE:** 9/27/2021

## Proposal for Kentfield Fire District Type 3 Fire Engine

The Kentfield Fire District staff has completed the development of specifications of a new 2022 Hi-Tech Type 3 Fire Engine. We will provide you with details of the specifications and answer any questions at the October 2021 Board of Directors meeting.

Our recommendation is for the Kentfield Fire District Board of Directors to consider the purchase of a Type 3 fire engine to be added to the Kentfield Fire District Fleet.

We feel that it will benefit the fire district as we continue to see an increased threat of wildland fires to our community, county, and the state of California. Type 3 fire engines are designed to be most effective operating in the wildland fire environment. The increased mobility and maneuverability from a shorter wheelbase along with 4-wheel drive gives us the ability to be most effective in confronting potential wildland fires within our community. Additionally, a Type 3 fire engine will leave us best prepared in meeting increased staffing requests to respond during red flag conditions, and pre-positioned events. Responding within the State of California under the statewide master mutual aid system will allow us to be a part of a strike team comprised of various Marin County fire agency resources. This provides greater safety due to already developed working relationships, improved communication from standardized training, and understood experience levels.

We have attached the Hi-Tech EVS, Inc. proposal for your review and discussion.  
County of Marin Request for Proposal NO. 2718 - Cooperative Agreement.

Staff recommendations:

1. Enter into contract with Hi-Tech EVS Inc. for the build of a 2022 Hi-Tech Type 3 Engine HV507 SFA (HV507) Quote No. 6393-0. Hi-Tech Job: N707.

Apparatus cost: \$445,606.00.  
Sales Tax: \$36,762.50.  
Pre-Pay Discount: \$(10,825.00)  
Total: **\$471,543.50**

2. Approve and accept the discount for 100% pre-payment. (\$10,825 saving)

3. Make a 2021/2022 budget adjustment by transferring \$471,543.50 from #6910 Apparatus Replacement reserve account to Capital Outlay apparatus replacement account #4070.



8

7

6

5

# **HI-TECH** EMERGENCY VEHICLE SERVICE, INC.



444 W. GREGER ST. • OAKDALE, CA 95361 • (209) 847-3042 • FAX (209) 847-2110

[www.hitechevs.com](http://www.hitechevs.com) [www.spartanmotors.com](http://www.spartanmotors.com) [www.toyne.com](http://www.toyne.com) [www.evi-fl.com](http://www.evi-fl.com)

September 28, 2021

## KENTFIELD FIRE PROTECTION DISTRICT

### HI-TECH / INTERNATIONAL / 360HP / TYPE-III WILDLAND PUMPER / DARLEY JMP-500 PTO PUMP

|                         | No Pre-Pay          | Pre-Pay Chassis<br>At Delivery | Pre-Pay Chassis At<br>Contract Signing | Pre-Pay 100% At<br>Contract Signing |
|-------------------------|---------------------|--------------------------------|--|-------------------------------------|
| Apparatus Cost, Pre-Tax | \$445,606.00        | \$443,106.00                   | \$440,606.00                           | \$435,606.00                        |
| Sales Tax @ 8.25%       | <u>+\$36,762.50</u> | <u>+\$36,556.25</u>            | <u>+\$36,350.00</u>                    | <u>+\$35,937.50</u>                 |
| Total Each Unit         | \$482,368.50        | \$479,662.25                   | \$476,956.00                           | \$471,543.50                        |

Plus any additional Federal, State or local fee, Tariff, or mandated safety equipment applicable at time of delivery.

Hi-Tech E.V.S. Inc., shall not be held responsible for delivery delays due to an act of God, component and/or chassis delays, or any other delay outside of the control of Hi-Tech E.V.S. Inc.

Pre-Payment Options: Discount listed above is based on payment within 30 days after receipt of invoice. Please see attached pre-payment form.

Delivery shall be approximately 365 days from date of clean order documentation.

This proposal valid for 90 days from above date.

Brian Ruthman  
Brian Ruthman, Vice President

9-28-21  
Date

\_\_\_\_\_  
Accepted By – Title

\_\_\_\_\_  
Date

# **HI-TECH** EMERGENCY VEHICLE SERVICE, INC.



444 W. GREGER ST. • OAKDALE, CA 95361 • (209) 847-3042 • FAX (209) 847-2110

[www.hitechevs.com](http://www.hitechevs.com) [www.spartanmotors.com](http://www.spartanmotors.com) [www.toyne.com](http://www.toyne.com) [www.evi-fl.com](http://www.evi-fl.com)

September 28, 2021

Kentfield Fire Protection District  
1004 Sir Francis Drake Blvd.  
Kentfield, CA 94904

Attn: Zach Nelson  
znelson@kentfieldfire.org  
Hi-Tech Job: N707

## Chassis & Pump Prepayment Approval

Chassis & Pump prepayment after chassis arrives at Hi-Tech and is inspected and approved by Fire Department representative.

| Pre-Pay Options                     | Pre-Pay Amount | Discount Amount | Accept |
|-------------------------------------|----------------|-----------------|--------|
| No Pre-Pay                          | \$0.00         | \$0.00          |        |
| Chassis Pre-Pay At Chassis Delivery | \$167,056.78   | \$2,500.00      |        |
| Chassis Pre-Pay At Contract Signing | \$167,056.78   | \$5,000.00      |        |
| Full Pre-Pay At Contract Signing    | \$471,543.50   | \$10,000.00     |        |

Note: No Sales Tax will be charged at this time unless full pre-pay option is chosen.

All Sales Tax will be charged on final invoice at delivery of completed unit.

Note: Discount will be deducted from final invoice.

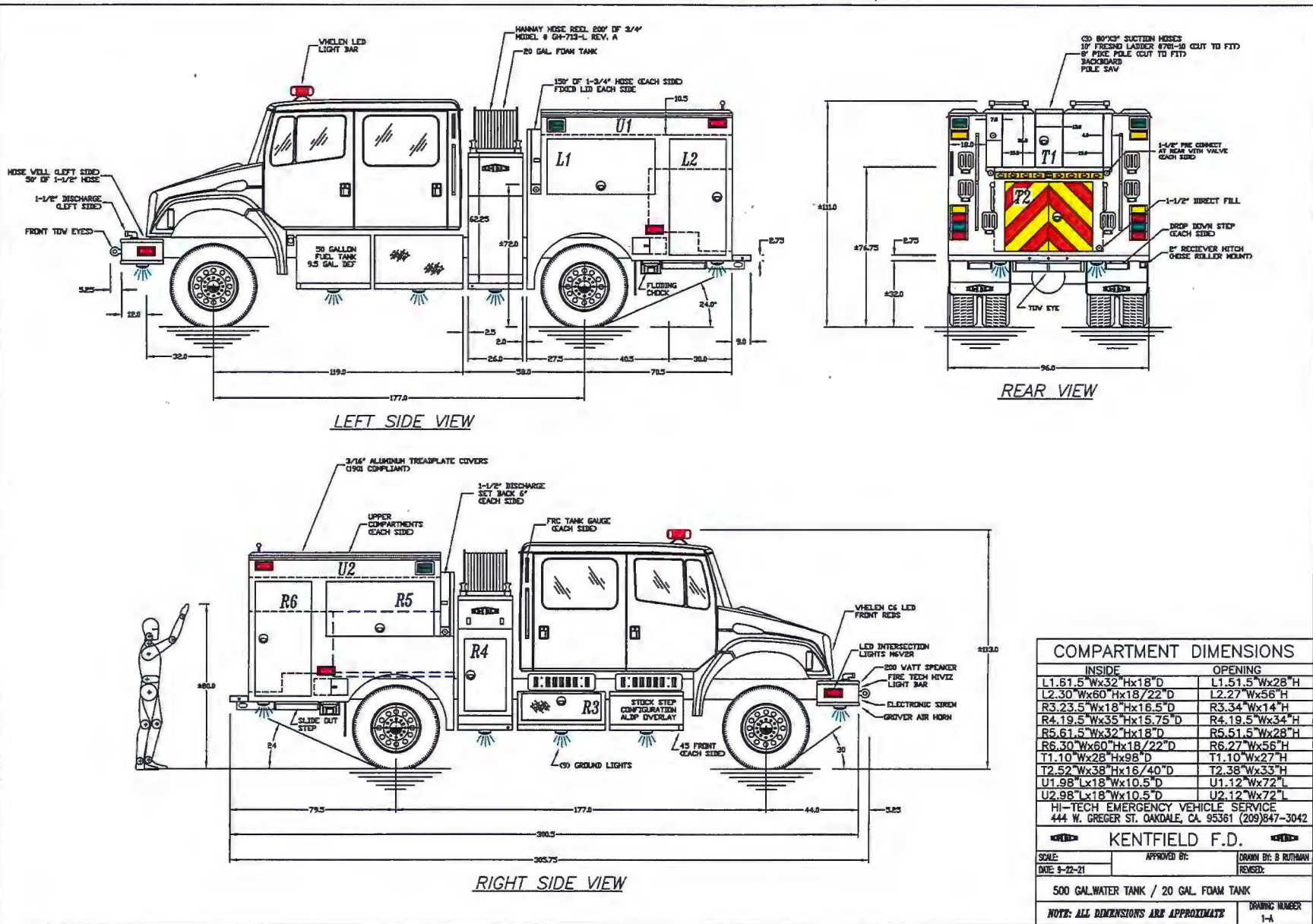
Note: Payment must be made within 30 days of invoice for discount to apply.

  
\_\_\_\_\_  
Brian Ruthman

9-28-21  
\_\_\_\_\_  
Date

\_\_\_\_\_  
Approval

\_\_\_\_\_  
Date



Dept. Kentfield Revised: 9/24/21 Date: 8/9/21

Job No. N707 Chassis: International HV507 SFA 4x4 (SR525)

Contact Person: Zack Nelson (415) 453-7464 znelson@kentfieldfire.org

MECHANICS

Chassis: V.I.N. \_\_\_\_\_ Chassis W.B. 177"

Engine: Cummins L9 360 HP @ 2200, 1250 lb-ft Torque @ 1200. Gov. 2200

Transmission: 3000EVS.

Alternator: 325-amp Leece Neville brushless.

Install one (1) indirect engine cooler: Chassis supplied.

Remove brake dust covers at all four wheels

Grab handles in ceiling above all doors

Auxiliary A/C on/off switch on dash

Relocate fuel/water separator to easily accessible location

Booster Pump

Model: Darley JMP-500-3.19 Serial number: \_\_\_\_\_

PTO Model: Chelsea Hot Shift 277XMFJP-\*5 129% engine rotation. Install protective PTO switch cover.

Location: Left side outlet.

**Tilt Test Apparatus in lieu of Electronic Stabilizer  
(Marin County unit will be tilt tested. This unit will have same center of gravity)**



**LUBE CHECK**  
**INITIAL WHEN COMPLETED**

|                               |             |
|-------------------------------|-------------|
| <b>Truck Number:</b>          | <b>N707</b> |
| Main engine oil:              |             |
| Main engine coolant:          |             |
| Power steering fluid:         |             |
| Belts:                        |             |
| Transmission fluid:           |             |
| Rear axle:                    |             |
| Midship pump gearbox:         |             |
| D.E.F.:                       |             |
| Windshield Washer Fluid:      |             |
| Unit engine oil:              |             |
| Unit engine radiator:         |             |
| Unit engine gearbox:          |             |
| PTO pump gearbox:             |             |
| Generator:                    |             |
| Tire pressure:                |             |
| Cab lift motor fluid:         |             |
| Ladder Rack motor fluid:      |             |
| Grease all zert fittings:     |             |
| Torque U-bolts:               |             |
| Torque Lug nuts:              |             |
| Hardware check front:         |             |
| Hardware check rear:          |             |
| Hardware check left:          |             |
| Hardware check right:         |             |
| Hardware check top:           |             |
| Hardware check undercarriage: |             |
| Hardware check inside cab:    |             |
| Weighed:                      |             |
| Fluid data plate installed:   |             |
| Pump data plates stamped:     |             |
| Emblems Installed:            |             |
| Checked by:                   |             |

| <b>PUMP TEST</b>                            |             |             |
|---|-------------|-------------|
| Main pump: Darley JMP-500                   | Ratio: 3.19 | G.P.M.: 500 |
| Auxiliary pump:                             |             | G.P.M.:     |
| Perform NFPA three point test:              |             |             |
| Operate auxiliary pump and check for leaks: |             |             |
| Operate foam system if applicable:          |             |             |
| Tested By:                                  |             | Date:       |

**Water Tank**

Tank capacity: 500-gallon Core 10 10-gauge steel "Wet Side".

Tank gauge: FRC gauge in cab, pump panel, cab sides, and rear of body.

Anodes: Six (6) per tank, 1" pipe flange.

Standard Hi-Tech filler pipe left side corner

**Tank Inlets And Outlets**

Tank filler size: 1.5"

Tank to booster pump plumbing size: 3"  
3" bottom of sump for tank drain.

**3/4" outlet lower left side portion of water tank for backpack filler.**

**Plumbing Through Tank**

Rear discharges: 1 1 1/2" L.S. 1 1 1/2" R.S.

**Tank Assembly**

Dupont Corlar 25P epoxy tank coating: Yes.

Bolt in baffles: Yes.

Install covers and filler pipe: Yes.

Prime and paint exterior as needed

**Foam Tank**

Capacity: Class "A" 20 gallons.

Tank Material: Stainless steel.

Tank location: Between hose reels.

Foam tank to have extended filler neck, no spill guard

## STEEL SHOP

Shear, brake and assemble body per drawing.

Tow bar: Tow eye center.

Body brackets: Standard.

Raise rear compartment floor 1" for additional clearance to prevent door from dragging on tailboard.

### Compartments

D-ring style door lock: All keyed locks #1250.

Door stops, side hinged doors: Cleveland style.

Top hinged doors: Air shock.

**Weld All Door Pans to Door Skins, NO DOUBLE STICK TAPE**

Compartment Lighting Whelen Plus Fluorent strip lights

### Items In Rear Wheel Wells

One dual air bottle compartment each side: Lower rear portion of wheel well, see print & pictures.

Note: Install an angle on floor of compartments to keep the inside air bottle from rolling forward. **Bottle diameter 6.5" x 24" long.**

Intersection light each side: Whelen M6V2R LED.

Wheel well liners: Welded in place style, front & rear.

Note: Install Stainless steel wheel well trim.

### Side Compartments

Compartment doors: Beveled edge, overlapping 3/16" aluminum w/1/8" pan.

Weld All door pans to Door Skins NO DOUBLE STICK TAPE

Hinge type: Stainless steel.

**Install stainless steel scuff angles bottom of each side compartment.**

**Left Side Body Compartments**

**Compartment Above Duals (L1)**

Single door: Top hinged.

Adjustable tray: 18" back from front jam of compt to allow for SCBA mounting plate forward (department supplied SCBA brackets).

Dual tracks for tray at each end

Two Tecniq LED (WD08) compartment lights recessed in compartment door.

**Full Height Compartment Aft of Duals (L2)**

Single door, Hinged front.

Department to mount tools

Chain saw pocket to be full width of rear compartment

**Engineer Compartment Under Crew Cab Door**

Single door: Bottom hinged. See drawing.

Slide-out tray with locking slides on both sides.

**As Large as Possible**

**Design TBD**

**Upper Compartment T1**

Install a "coffin style" compartment running parallel to full length of hose bed.  
(1) top access door

Right Side Body Compartments

Compartment Above Duals (R5)

Single door: Top hinged.

Adjustable tray: (1).

Dual tracks for tray at each end

Two Tecniq LED compartment lights recessed in compartment door.

Full Height Compartment Aft of Duals (R6)

Single door, Hinged front.

SCBA Brackets: (2) Department supplied.

Stationary tray: Mounted directly above C-TECH (Tool Box).

Adjustable trays: (2) between CTECH tool box and front wall.  
3/4" flanges facing down.

Slideout tray: Mounted below C-TECH tool box with flanges down.

CTECH 4-drawer cabinet: Mounted bottom of compt 20"H x 12"W x 20"D.

Pump Panel Compartment (R4)

Location: Right side pump panel area, see print.

Compartment to bolt on w/ 3/8" bolts & tapped holes

Slide-out tray, bottom of compt: (1) For mounting department supplied Honda water pump, model WH20X 18"w x 16"d x 18"h W/ 2 adapters from 2" female NPSH to 2 1/2" male NH. Locking slides on both sides.

Stationary tray: (1) 1" above water pump.

Install removable access panel on back wall, see picture.

Compartment Under Crew Cab Door (R3)

Single door: Bottom hinged. See drawing.

Slide out tray for batteries with locking slides on both sides. Provide storage if space permits.

## STEEL SHOP

### Upper Compartment T2

Install a "coffin style" compartment running parallel to full length of hose bed.  
(1) top access door

### Rear Compartment (T2)

Double doors: Fabricate from smooth aluminum, to be painted. Auto City Handgrab on each door, see pictures.

Slideout tray: (1) 36" deep, ? wide for ice chest with double slide to provide over 100% extension, left side.

Stationary tray: (1) 3/16" aluminum full width same height as back wall floor.

Whelen Traffic Advisor above compartment: w/ 3/16" ALDP light shield  
Raise floor 1" for additional door clearance

### Cab Console

Material: Aluminum console w/powder coat finish for mounting pump controls, radio & map box. Map box dimensions: 22"W TBD x 34"D x 16"H. Check w/department for exact design. Add 1.5" jamb and narrow door width on map book compartment to clear arm rest. Flush D-ring pulls on lids for map compartment and pump controls. Lid on rear console to be narrowed with 1" flange on each side to clear arm rests. Raise rear console 1" for drawer clearance.

Location: (2) Between front and rear seats.

### I Zone Brackets/Hose Hooks Use heavier material

Model: (2) Stainless steel round stock extendable hose hooks. Extending 14" w/a 12" vertical bracket. Install a pin to hold the hose hook "IN" and in the "OUT" positions. Pull down on I Zone bracket and drill pin hole. Make sure to install nozzle hook on hose hook, see picture.

Locations: One each side at rear next hose bed, see print.

## STEEL SHOP

### Hose Bed (See Print)

Standard guard around water tank filler.

Standard aluminum hose bed floor.

1/4" aluminum hose bed dividers: Cut handgrabs in dividers See drawing.

Left side (1) Stationary divider w/ removable horizontal shelf.  
Handgrabs 36" apart and at each end.

Center: Hose bed compartment for (1) 10' Fresno ladder, model 701.  
(3) 3" suction hoses mounted vertically w/storage for long  
tools above. Install a hinged access door top of  
compartment as large as possible, see pictures.  
No divider in upper section.

Right side: (1) See drawing.

Install a transverse divider to the right side of ladder compartment. Set same distance from front sheet as Marin Co.

(2) Tecniq E100 Hosebed lights each side, on when lids are open.

ADP hose bed covers: Non-locking shocks

Back board compartment: (1) Right side inside of ladder chute with  
adequate clearance to allow backboard to tilt for easy removal.

### Aluminum Diamond Plate

1/8" ADP rear compartment face below hosebed. Kick plate at bottom

3/16" ADP front face **only** of each side compartment.

1/8" ADP kick plate bottom of left and right side pump panels.

3/16" NFPA ADP running board each side.

3/16" NFPA ADP lower rear step, Hinged with bottom skinned with smooth aluminum 12" deep with recessed clearance lights. Flip down Bustin step in center

## STEEL SHOP

### Handrails

1 1/4" aluminum tubing with rubber inserts:

Each cab door: Chassis supplied.

Rear: Each beavertail.

Rear of each hosebed lid

Auto City Handgrabs:

Front of each hosebed cover

On rear compartment doors

Cab interior above each door

### Exhaust System

Discharge right side forward of duals.

Modify exhaust pipe for dept's extraction system: PlymoVent with 4" pipe, removable tip for easy replacement.

Fab double wall heat shield on Gear compartment

### Batteries

Type: Group 31.

Batteries with chassis: 3

Location: Right side under rear cab door.

Slide-out tray: Batteries facing inline side to side on slide out tray.

Driver & officer's cab steps: Knurled ALDP.

### Front Bumper

Extension: 14" With the following: Open hose tray left side for 50' of 1.5" hose, compartments center and right sides w/hinged lids as large as possible. Fabricate hosewell out of 3/16" alum with 1/4" angle supports. Spotface ALDP deck and use 5/16" panhead screws

Mount 2" Receiver Hitch below & flush w/ front of bumper allowing keeper pin access

Bumper: Painted only.



Rope Anchor Loops **Turn loops under running boards verticle**

Location: (6) Stainless steel (Mc Master), one each under left & right running boards. One each left & right side pump panels as high as possible. Two in front bumper. Turn loops under running boards vertical

Side Slide-Out Steps

Install two (2) slide-out drop down style steps, one each side under compts "L2" & "R6" rear of duals.

Tow Hitch Receivers

Locations: (3) Two under rear step, right side, see picture. One at front bumper, check w/dept for exact location.

Provide full ALDP rear cab steps, 98-1/2" wide with minimum of 5" step depth. Align rear boxes with back of cab for maximum storage. Top of box to hang over edge 3/4" bent down 45 degrees to provide drip rails on compartments

Pump Panel Left Side

BK176 Powder Coat Pump Panels

Pump Panel Gauges to Measure 0-400 PSI

Crosslay Live lines Left & Right Sides

Crosslay compartments: 2 Aluminum hose rack.

ADP cover Fixed each side, center to be hinge forward

Horizontally front stainless steel hinge crosslay access door.

Class-1 Liquid Filled Style Gauges

Gauge face color: White.

Gauge size: Compound 30-0-400, pressure 0-400 3.5" diameter.

Discharge gauges: None required.

**Fire Research Tach Pro 3** w/the following: Tachometer, oil pressure gauge, engine temperature gauge & voltmeter.

Vernier throttle

Indirect cooler

Test gauge outlets.

Primer control

Darley prime system.

Multi drain

Relief valve control.

Audible and visual alarm for oil pressure and water temperature.

Pump hour meter.

Water level gauge: FRC Tankvision

Foam level gauge: FRC Tankvision

Transfer valve control

Foam system controls.

Panel light switch.

Rear and side scene light switches.

Air horn push button switch.

Chassis air outlet

Suctions

Tank To Pump

Warner 3" Electric Actuator / valve with check valve and electric controls

Left Side Suction

4" Main Suction

Pipe size: 4" Line W/ Cap No Drain

Adapter size: Chrome 4" Female NPT x 4.5" male NST w/screen.

2-1/2" Suction

(1) Lower right corner of pump panel see picture.

Pipe size: 2-1/2" plumbing with Akron ball valve.

Adapter size: Chrome 2-1/2" NST Female swivel.

## PLUMBING

### Discharges

#### Hannay Hose Reels FOAM

Reel: 2 Size plumbing: 1" Valve control location: On reels.

Model no.: CDFSBEPEF 22-21-22 RT & LT (Painted) CAPACITY: 200' of .75"

Location: One each side above pump panel.

Reel roller location: Two vertical & one horizontal at bottom, each left & right sides, see picture.

Reel control: Std. Push button: x L.S.. x R.S..

#### Crosslays Compartments FOAM

Two crosslays, 1.5" plumbing: Inside each individual compartments above adapter. Controlled by handle in front of body.

Location: (2) One each left & right side front of body 28"D x 4.5"W x 26"H w/hinged doors each side & top of compartments. Capacity: 100' of 1.5" & 10' of 1.75".

Adapter: 1.5" NST, recessed 6" from the side of body, see pictures.

Drains: Two drains Left side kick panel.

A compartment is created in the center by the two hose compartments w/a top hinged access door w/finger hole, install brace, front to rear top of compartment to withstand force of charged hose. Make top solid over hose storage only.

### 1 1/2" Discharges

#### Front Bumper Discharge (1) FOAM

Add additional shut-off valve behind fuel tank, zip-tie it open in-case of front end damage

Plumbing size: 1.5" Control location: Control on valve located at front Bumper, left side.

Adapter size: 1.5" swivel. Install swivel stop.

## PLUMBING

### Rear Livelines **FOAM**

Plumbing size: (3) 2" with 1-1/2" half coupler welded on pipe before 1-1/2" valve. See pictures.

Control location: One at pump panel, two at rear.

Gauge: None required. Drain. Adapter size: 1.5" NST male valve face.

Location: Lower left live line, far left side below removable shelf. Lower left & right side 2" through water tank, below hosebed, through upper area of rear compartment.

Right & Left Lower liveline with valve and control at rear  
Left lower live line moved to far left side of hosebed  
Only left upper liveline to be controlled at pump panel  
**Add removable shelf above left upper live line for storage.**

### Tank Filler

Plumbing size: 1.5" **Schedule 80.** Std. 1477 control at left side panel.

### Direct Tank Fillers

Plumbing: (2) 1.5" Plumbing w/shut-off valve & check valve. Provided w/1.5" female swivel adapters w/screens & plugs.

Location: One at left side pump panel and right side rear of body as low as possible. Control to be located at each inlet.

### Backpack Filler

Plumbing: .75" w/.75" quarter turn drain style valve w/female .75" garden hose thread w/cap

Location: Below running board left side pump panel. Connect plumbing to lower portion of water tank.

### 2 1/2" Discharges Akron Valve W/Droop

Left side: 1 Std. control and drain.

Gauge: None required.

## PLUMBING

### Foam System

Foam Pro 2001: Mount pump inside right side pump panel plumbing inspection door, see picture.

Remote control switch: Mount on cab console.

Flow meter size: 2"

Class "A" foam

Discharge to: All 1.5" & reels.

Install (2) water discharge check valve between pump and flow meter.

Foam tank capacity: Class "A" 20 gallons.

Foam tank level gauge: FRC Tankvision.

Tank Material: Stainless steel.

Tank location: Between hose reels.

Install 3/4" foam tank shutoff valve.

Install 3/4" foam tank drain valve.

### PTO Pump

Model no. Darley JMP-500-3.19 Maximum pressure: 800

Pressure gauge: 0-400 Back-Lit white face In cab. Left side panel.

Non gated pump cooling line.

Darley relief valve: (2) controllers, one inside cab & one at left side pump panel. Install a relief valve controller selector valve on cab console.

Priming system: Darley primer w/control at left side pump panel.

## ELECTRICAL

### Multiplex Body

#### LED DOT Clearance Lights And Reflectors

- 2- Amber clearance lights, one each side, forward on running boards.
- 5- Red clearance lights, on rear step, 3 center rear, one each side.
- 2- Red clearance lights, top of beavertail, one each side.
- 4- Red reflectors, bottom rear, facing to rear and each side.
- 1- License plate light.

#### Whelen LED Taillight Package

Whelen taillight package.

Red tail and brake light: C6BTT.

Amber turn signal: C6T.

Clear backup: LED C6BU.

#### 12 Volt Lighting

##### Compartment Lighting

Compartment lighting: Whelen Plus Flourent LED strip lighting, model F??PC.

Mount one each side of compartment opening, total of six (6) compts.  
**Side rear compartments to have light on one side.**

Mount two LED lights in each horizontally hinged compartment door.

##### Compartment "open" warning

Compartment "open" warning light in cab.

Compartment "open" audible alarm.

Connect hose bed cover "UP" w/lever style sws to compt "OPEN" warning.

Warning light to operate only when parking brake is released.

## ELECTRICAL

### Add Whelen 60CREGCS red/white dome lights, 1 front 1 rear

#### Pump Panel Lights

Standard pump panel lights, left and right side, controlled Left side.

One light left & right side to illuminate when pump is engaged

#### Front Scene Light

Model: (2) Fire-Tech Hi-Viz Guardian Elite LED, model FT-MB-2.18-FT-B Light.

Location: Opening in front bumper.

Activation: Dash switch.

#### Rear Scene Lights

Model: (2) Fire-Tech Hi-Viz Guardian Elite LED, model FT-GESM-B lights With P-GSM-BDKIT bezel delete kit.

Location: Above upper rear warning lights.

Activation: Dash switch, pump panel switch & when reverse is selected.

#### Side Scene Lights

Model: (2) Fire-Tech Hi-Viz Guardian Elite LED, model FT-GESM-B lights With P-GSM-BDKIT bezel delete kit.

Location: Top of side compts one each side, mounted forward upper corner, see print.

Activation: Dash switches, pump panel switches.

#### Fog Lights

Provide 12v switched power for department supplied LED light bar that will be mounted in the opening of front bumper. Provide switch on dash on driver side labeled LED Light Bar

(2) Rigid 511313 lights on angled portions of front bumper



## ELECTRICAL

### Ground LED Lights

Ground lights: 9  
Each cab door  
L. and R. pump panel  
Under front bumper: 1  
Under rear step: 2  
Clear portion of lower intersection lights

Controlled: All lights to activate w/cab doors, switch in cab, when reverse is selected, pump panel light switch, and with parking brake.

### Cab Step lights

(1) light under cab at each door position, activated with opening of door or ground lights

### 12-Volt Power

Location: 12-volt, battery direct, 6 gang fuse block in compartment "L1" & "R5", mounted to track in rear of compartment. (2) Blue Sea 12-volt outlets front console near top of angled Panel. Chargers in rear to be battery hot, inside console. Add 12v power Studs inside center console for future components.

### Hosebed Lights

Model: (4) Tecniq E100 LED lights

(2) each side on lid, switch on lids for activation.

### Chassis Air Outlet

Chassis air plumbed to left side pump panel with pressure protection valve in line: Department providing fittings.

### Engine Warning System

High water temperature and low oil pressure warning at pump panel

## ELECTRICAL

### Water And Foam Tank Level Gauges

Model: (1) FRC Tankvision gauge.

Location: Pump panel.

Activation: When parking brake is applied.

Model: (3) FRC Maxvision gauge.

Locations: One each side of cab, upper rear corners. Left rear of body.

Activation: When pump is engaged.

Model: (1) FRC Tankvision mini gauge.

Location: In cab, on console near pump controls.

Activation: When pump is engaged.

Model: (1) FRC Tankvision **FOAM** gauge.

Location: Pump panel.

Activation: When parking brake is applied.

### PTO Switch

PTO switch to be in factory dash panel, between ignition switch and steering column

Install a PTO activation indicator light on cab console.

Don't install PTO over speed cutout.

Install "RUN" "WALKAWAY" switch on pump panel (low water pressure shutoff override)

### Batteries

Chassis supplied battery switch.

Relocate jumper studs to between cab and battery compartment

### Battery Conditioner

Model: Kussmaul 35/10 Mounted under rear seat, left side.

20 Amp Super Auto-Eject with **red** cover.

Location: Forward of drivers door.

## ELECTRICAL

### Communication System

DAVID CLARK system (4) Headset, interface w/ two separate radios.  
(2) PTT buttons for both Driver & Passenger. Location TBD.  
Front headsets mounted on plate with two way radio speakers.

### Two Way Radio

Install (2) Radios & antennas Dept to supply

Model: TBD radios to be mounted to center console or in dash if space permits.

Speakers to be mounted on plate on ceiling with David Clark headsets

12-volt radio power: Power & ground studs under rear seat left side  
mounted top of battery conditioner shield.

### Cradle Point Modem

Install department supplied cradle point modem with low profile rocker switch near modem to kill power. Modem to be wired battery hot.

### Hand Lanterns

Location: Mount (2) department supplied Maglight flashlights  
Check w/dept for location.

### Camera

Model: (2) Rear View Safety Systems.

Display: Rear View Safety Systems G-series 7.2".

Location: One at front, one in center of split traffic advisor. Narrow  
profile display in map pocket above driver.

Activation: Front active with release of parking brake, rear when  
reverse is selected.

Audible Warning Devices

Electronic Siren

Model: Whelen CCSRNT4A W/ optional CANCTL6 control head.

Activation: Siren control head.

Location: Center console.

Speaker model: (1) BP200EF 200-watt

Location: Front bumper right side.

Air Horn

Model: (1) Grover 24".

Control: Pump panel switch & Dash switch.

Location: Attached to frame right side.

Install air horn push button switch at left side pump panel. Mount next to throttle control.

Backup Alarm

Chassis supplied backup alarm with kill switch.

Visual Warning Devices

NFPA 1901 Warning Light Package:

Lighting control

Type: Whelen CCSRNT4A W/ optional CANCTL6 control head.

Light Bar

Model: Whelen Freedom IV Series LED Model #F4N0VLED, with alley lights and front takedown lights

Front Reds

Model: (2) Whelen Super LED C6LR w/ Alternate Flash & Bezel

Location: Grille.

Rear Warning Lights

Upper rear amber, right side: Whelen Super LED C6LA below scene lights.

Upper rear amber, left side: Whelen Super LED C6LA below scene lights.

Lower rear red, right side: Whelen Super LED C6LR in lowest position.

Lower rear red, left side: Whelen Super LED C6LR in lowest position.

W/ Alternate flash

## ELECTRICAL

### Intersection Lights

Model: (4) Whelen M6V2R Super LED red w/bezel

Each side of front bumper  
Each side in rear wheel well

Model: (2) Whelen C6LR Super LED red w/bezel

Each side in upper rear corner

### Headlight Flashers

Hi-Tech supplied

### Whelen Traffic Adviser

Model: Whelen TANF95 LED.

Location: Surface mounted below hose bed ALDP shield.

Provide 3/16" ALDP cover with side gussets

Traffic Advisor to be controlled by siren control head.

## PAINTING

Paint: Dupont Imron Elite. Paint cab: No Paint body: Yes

Two tone cab: No.

Top Color: 786976EB (PPG 3017).

Bottom Color: M3213EX (PPG 75041).

Paint plumbing & pump compartment white.

Rhino Line inside of compartments.

Paint air bottle compartment doors red.

Paint hose reels red.

Paint Front Bumper

Don't paint Engine, wiring, filters, air dryer & Name plates.

1-Quart of touch-up paint with activator.

### Lettering And Striping

Lettering: 4" gold reflective around seal.

Department seals: Provide & install. Location: One each front cab door.

Gold leaf with black outline and white pinstripe below at cab paint break

### Reflective Tape

Size: TBD. Color: White

Engine numbers: TBD.

Install "TBD" in 18" white vinyl on cab roof.

Rear red & yellow chevrons: Apply to rear compt double doors.

## ASSEMBLY

### Flaps

Hose bed, Color: Red.

Seat belt style buckle tie downs: (3) Vertical (1) Horizontal, (5) buckle per side.

Crosslays: Hinged doors.

### Compartment Flooring

Turtle tile, Color: Black.

All compartment floors with ramped edges, All trays.

### Folding Steps

Quantity: 6

Location: Same as Marin Co.

### Additional Hand grab

Auto City hand grab: (1) On top of hose bed ladder compartment at rear, front of each hosebed lid, each rear compartment door.

### Equipment

Ladder: (1) Fresno, 10'-0 Duo Safety 701 Series extension ladder Shorten if needed.

### Hard Suction Hose

Type: (3) Kochek 3" x 8' w/2.5" rocker lug couplings. One short for strainer.

Chock Blocks: (2) Zico SAC-44 folding.

Mounts: (2) Zico SQCH-44H

Location: One each side rear of duals.

Booster hose: (2) Lengths of 175' x .75" MPSH threads.

Hose reel nozzles: (2) TFT 1" DQ40 Quadrafog (NPSH) tip w/TFT ball valve waterway, 1" D75DR-Ridid Ball valve NPSH.



Booster Reel Nozzle Cup: (2) Use P.A.C. type mounts?

ASSEMBLY

Install red ID label for pump panel air horn push button.

Install straps on interior of upper compartment doors to assist in closing.

1-2.5"F x 1.5"M & 1.5" cap left side 2.5" discharge.

2-Hi-Tech wiring diagrams, one digital and one paper.

1-Quart of touch-up paint with activator.

1-Quart of Durabak.

Plate in cab w/all fluid types, Engine oil, Engine coolant, chassis transmission fluid, pump transmission lubrication fluid, pump primer fluid if used, drive axle lubrication fluid, transfer case fluid, power steering fluid, tire pressure, DEF and fuel.

Chassis supplied items:

1- Owner's manual.

1- Chassis repair manual.

1- Engine, Transmission parts & repair manuals.

Warranties

Hi-Tech: 1-year

Chassis: 1-year

Frame: 7-years

Paint: 7-years

Pump: 2-years

Water tank: 12-years

Engine: 5-years

Trans.: 5-years

PTO: 2-years

Axles: 2-years

Body: 10-years (Rust/Structural)

Plumbing: 5-years

Multi-Plex: 4-years (1-year parts & labor) (3-years parts only)



Board Meeting – Chief’s Report

October 2021

### California Wildfire Season

**1 of every 8 acres in California has burned in the last 10 years.**

The state's eight largest wildfires have all occurred since 2017, and the trend shows no signs of letting up.

A century of fire suppression has left forests in many areas thick with brush and dead trees. When fires start, either from lightning, downed power lines or other causes, they burn much bigger and hotter than they historically would have because there haven’t been regular fires to thin out the landscape.

On top of that, California endured a severe drought from 2012 to 2016, and entered a new one last year. The past two years have been the driest in Northern California since 1976-77.

The lack of rain and snow has left vegetation dangerously dry. Add to that, climate change is causing hotter temperatures, particularly at night, a time when firefighters in the past could gain the upper hand. Hotter temperatures are melting snow and causing dry conditions — fire season — to last longer. Meanwhile, more people are moving into fire-prone areas, increasing the risk of ignitions.

Fires are often burning hotter, and with larger flame lengths. That’s making them harder to put out. We are seeing such extreme conditions that a lot of the old tactics aren’t working as effectively.

If history is any guide, another month or two of fire season remains in most of the state, including the Bay Area, before November rains are expected to reduce the risk.

**To the entire Kentfield Fire Family, keep up the outstanding work and stay safe!**

Respectfully,

*Mark Pomi*

Mark Pomi, Fire Chief  
Kentfield Fire Protection District



# Kentfield Fire Protection District

Mark Pomi  
Fire Chief

1004 Sir Francis Drake Boulevard  
Kentfield, CA 94904

Phone : (415) 453-7464  
Fax : (415) 453-4578



## LARGEST WILDFIRES IN CALIFORNIA

Wildfires in California are getting larger. Nine of the 10 largest wildfires statewide since 1932, when modern records began, have occurred in the past decade.

The Dixie Fire, which began July 13 near Chico, has become the second largest, with 963,309 acres burned as of Sept. 27 — an area three times the size of the city of Los Angeles. Other fires still burning — the Monument Fire, Caldor Fire and River Complex — are currently ranked the 14th, 15th and 18th largest respectively.

| Rank | Fire                  | Acres burned | Year | Cause               | Structures destroyed | Deaths |
|------|-----------------------|--------------|------|---------------------|----------------------|--------|
| 1    | August Complex        | 1,032,648    | 2020 | Under investigation | 935                  | 1      |
| 2    | Dixie Fire            | 963,309      | 2021 | Under investigation | 1,329                | 1      |
| 3    | Mendocino Complex     | 459,123      | 2018 | Human related       | 246                  | 1      |
| 4    | SCU Complex           | 396,624      | 2020 | Under investigation | 222                  | 0      |
| 5    | Creek Fire            | 379,895      | 2020 | Undetermined        | 856                  | 0      |
| 6    | LNU Lightning Complex | 363,220      | 2020 | Under investigation | 1,491                | 6      |
| 7    | North Complex         | 318,935      | 2020 | Under investigation | 935                  | 1      |
| 8    | Thomas Fire           | 281,893      | 2017 | Power lines         | 1,063                | 2      |
| 9    | Cedar Fire            | 273,246      | 2003 | Human related       | 2,820                | 15     |
| 10   | Rush Fire             | 271,911      | 2012 | Lightning           | 0                    | 0      |
| 14   | Monument Fire         | 224,103      | 2021 | Lightning           | 50                   | 0      |
| 15   | Caldor Fire           | 204,436      | 2021 | Under investigation | 1,003                | 1      |
| 18   | River Complex         | 198,555      | 2021 | Lightning           | 122                  | 0      |

Active fire

Size comparison:  
1 square = San Francisco (30,016 acres)

Note: Dixie Fire data as of Sept. 27. Monument Fire, Caldor Fire and River Complex as of Sept. 28.  
Source: Cal Fire



**From:** Elizabeth L. Waller <[elizabethlwills@gmail.com](mailto:elizabethlwills@gmail.com)>

**Sent:** Friday, October 01, 2021 12:15 PM

**To:** Jena Wilson <[jwilson@kentfieldfire.org](mailto:jwilson@kentfieldfire.org)>

**Subject:** Thank you!!!

Here are some photos of the best day of Davey's whole life! Can't thank you all enough!! For all you do!! You guys are the BEST!

Elizabeth Waller  
44 Rosebank Avenue





On behalf of the residents  
of Kent Woodlands, we thank  
you for your quick response  
in protecting our neighbor-  
hood yesterday during the  
fire on Goodhill Road!

With gratitude,  
The Kent Woodlands  
Property Owners  
Association

~~Davey Waller~~

Dear Kentfield Fire Department,  
Thank you from the bottom  
of our hearts for making our  
four year old son's birthday so  
special on Wednesday! You truly  
made his dreams come true! Look  
out for an application from  
Davey Waller in 15 years! I'll be  
so grateful for ALL you do!  
C. Waller, 44 Roschank

TO THE SUPER

GREAT FIRE MEN!!  
YOU DID WONDERS  
HELPING MY FALLEN  
WIFE BACK TO BED,  
SO GENTLY DONE!

ALL OF US APPRECIATED  
YOUR WORK, SO, VERY

PROFESSIONAL TOO.

GOOD ADMIRATION &  
FROM US THANK YOU.

NANCY & SON B.  
BARBOUR.





Fire knows no jurisdictional boundaries, and our cooperation must transcend individual agencies.

September 1, 2021 | **Features** | By Mark Brown, Sashi McEntee, Dan Schwarz, and Bill Tyler

## How Marin County is changing the wildfire prevention paradigm

Mark Brown is the executive officer of the Marin Wildfire Prevention Authority and can be reached at [mbrown@marinwildfire.org](mailto:mbrown@marinwildfire.org). Sashi McEntee is a board member for the Marin Wildfire Prevention Authority and can be reached at [smcentee@cityofmillvalley.org](mailto:smcentee@cityofmillvalley.org). Dan Schwarz is the Larkspur City Manager and can be reached at [dschwarz@cityoflarkspur.org](mailto:dschwarz@cityoflarkspur.org). Bill

Tyler is the fire chief for the Novato Fire Protection District and can be reached at [btyler@novatofire.org](mailto:btyler@novatofire.org).

---

Marin County, like many of California's cities, towns, special districts, and counties, provides fire prevention services. In Marin, nineteen different agencies have this responsibility — plus several regional, state, and federal land managers as well. With nearly 70,000 housing units in Marin's wildland-urban interface, fire danger is a very real and immediate concern for many residents.

In October 2017, the conditions that produced the North Bay Fires existed in Marin. We simply got lucky and avoided that one spark that led to disaster. The question quickly became, “Could so many fire prevention agencies work together to prevent a devastating loss of life and property, not to mention a catastrophic release of CO2 and loss of habitat?” The answer was yes; our community banded together and used this wake-up call to start shifting the wildfire prevention paradigm from siloed agency plans to a countywide fire prevention effort.

The scope of prevention work is very much a function of community tolerance. We cannot mitigate fire risk to zero, but we can strategically reduce fuel sources, harden homes, organize neighborhoods, improve alert systems, and clear evacuation routes. After the North Bay Fires, community interest and tolerance for prevention work increased, making a different sort of conversation possible.

Together we have a shared vision: coordinated, countywide fire prevention. Fire knows no jurisdictional boundaries, and our cooperation must transcend individual agencies.

## **Identifying resource needs and lessons learned**

In the wake of the North Bay Fires, the Marin County Board of Supervisors created a “Lessons Learned Committee” to study what happened to our neighbors to the north. Representatives from the county government, city/town managers, fire, law enforcement, and land management agencies participated.

In addition to interviewing Sonoma County officials, the committee hosted a public forum to gather community input and preferences. It also inventoried Marin's existing programs and identified gaps within and across agencies.

The committee's recommendations included the creation of a countywide joint powers authority (JPA) to work on cross-jurisdictional fire prevention projects out of reach of most individual agencies — a recommendation repeated in a subsequent grand jury report.

## **Residents overwhelmingly support dedicated fire prevention funding**

In 2019, a committee of agency executives and staff convened and worked quickly to draft a joint powers agreement and a measure for the 2020 primary ballot. By the end of the year, seventeen agencies agreed to form the Marin Wildfire Prevention Authority (MWPA) and Measure C was placed before the voters, passing with 70.8% of the vote. Measure C will sunset in ten years unless it is renewed by the voters.

Measure C generates approximately \$19 million per year, with money spent in three categories. Sixty percent goes to core programs, key countywide efforts overseen by MWPA; 20% is allocated for defensible space evaluations — property-by-property assessments of fire risk, with a corresponding analysis and report for the property owner to use. The remaining 20% is spent on local prevention work by the member agencies that fit the mission of the MWPA.

## **Building the organization**

The joint powers agreement was drafted along with the following tenets: fair representation, informed decision-making, thoughtful distribution of resources, and accountability. The agency's board of directors is composed of elected officials from the member agencies. Fair representation is promoted through a weighted voting system that promotes consensus-building by preventing blocs of agencies from dominating decisions. To inform board votes, items are reviewed by two staff-level committees, an operations committee, and an advisory/technical committee. These committees consider the cost-benefit aspects of the

activities funded by MWPA. Key stakeholders, such as regional land managers, participate on committees as non-voting members.

To ensure thoughtful distribution of resources, the Marin Wildfire Prevention Authority's territory is divided into five geographic zones, into which resources are invested as equally as possible. Each zone contains agencies in proximity to one another that share common fire prevention challenges. An early challenge —and success — was establishing the infrastructure to support member agencies with differing needs and capacities, while developing a shared knowledge base of best practices.



**17 agencies with different level of work backlog, resources available, community support**



**JPA Operational Boundaries: 5 Geographic Zones**

The Marin Wildfire Prevention Authority's territory is divided into five geographic zones, into which resources are invested as equally as possible. Each zone contains agencies in proximity to one another that share common fire prevention challenges.

Accountability in fire prevention is a tricky thing. Success means something does not happen. Therefore, the joint powers agreement provides for a strong citizens' oversight committee. This group does more than review the agency's books: It also helps us explain our work and its value to the public.

Fiscal year 2020-21 was MWPA's first year of operation. To build momentum, funding was directed to projects that member agencies could easily launch. At the same time, the board and its committees focused on housekeeping issues, hiring staff, and a work plan that includes the first core programs. Much focus of the early core work of MWPA is on environmental compliance for vegetation management. The ability of member agencies to navigate the California Environmental Quality Act (CEQA) varies greatly. By centralizing this work and placing it in the hands of a team of experts, MWPA is preparing compliance documents, best practices guidelines, and training opportunities that will level the playing field and help every member tackle the shared goal of fuel reduction.

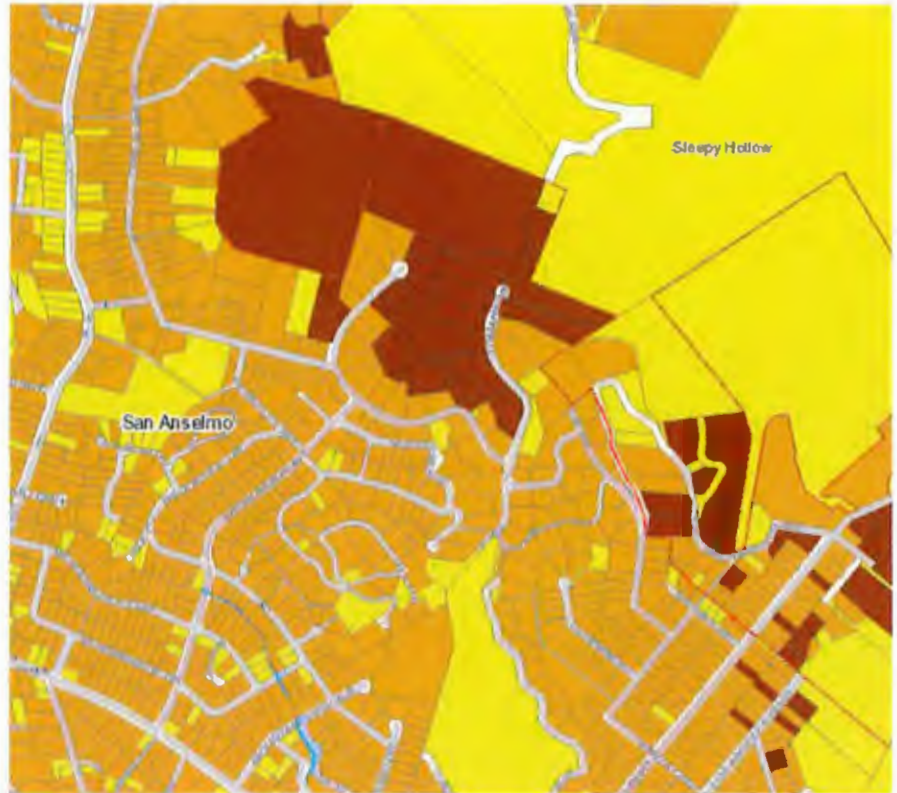
## **Forging partnerships with the environmental community**

Our commitment to the environment extends beyond CEQA compliance. One of Marin Wildfire Prevention Authority's unique features is its strong partnerships with the environmental community. Firefighters joined with local environmental groups to create the Ecologically Sound Practices Partnership, a unique synergy that creates an open forum for discussion about sensitive habitats, best practices, and trade-offs as approaches to vegetation management are considered.

The state responsibility areas of MWPA's territory are covered by the California Vegetative Treatment Program. MWPA is leveraging this work, augmented by local biological surveys, to approach its work plan and ensure an appropriate balance is struck.

## **Fire science and vegetation management**

Marin has adopted an updated science-based Community Wildfire Prevention Plan that serves as a road map for identifying areas of concerns down to parcel-level hazard assessments and contains general project scoping. By building our vegetation management programs from the ground up, MWPA can make use of the latest in fire science and ecology.



Marin County adopted an updated science-based Community Wildfire Prevention Plan that serves as a road map for identifying areas of concerns down to parcel-level hazard assessments and contains general project scoping.

We are creating shaded fuel breaks along the wildland-urban interface boundary, which are designed to slow, or even stop, the spread of an average intensity wildfire. They will decrease the intensity of extreme wildfires so our residents can evacuate safely, and our firefighters can suppress the fire. We are also working with the land management agencies to perform and coordinate vegetation management projects in our open spaces. Our vegetation management practices are conducted in an ecologically sound manner, which not only lessens the risk of wildfire but increases the health of our forests and environment.

## Using a collaborative approach to improve fire safety

The Marin Wildfire Prevention Authority was created to extend the county's collaborative efforts so we can learn from each other, making our member communities safer and raising the overall level of service. By establishing partnerships with stakeholders, we can have a robust discussion and pivot our work-plan approach each year to fit new learning and new conditions.

We cannot mitigate our fire risk to zero, but we can remove hazards, reduce vulnerabilities and shift the paradigm to one of cooperation and coordination, by working together to create a fire-adapted and more resilient Marin.

Interested in learning more? This topic will be the subject of a session titled “Changing the Wildfire Prevention Paradigm” at the League of California Cities Annual Conference and Expo on September 23, from 1:15 p.m.-2:30 p.m. in Meeting Room 9-11.

---

## *Related Content*



September 1, 2021 | By  
Cal Cities Annual  
Conference and Expo  
speakers

### **How the public and private sectors are creating more energy-efficient cities**

Even if the world meets the goals set forth by the Paris Climate Agreement, the effects of a warming environment will be felt in California for decades. “Historical and unprecedented” wildfire seasons and droughts are becoming the norm and sea levels are predicted to rise by as much as seven feet by 2100. However, many local leaders are doing more than just hardening their communities against climate change; they are also actively working to reduce its effects.



# CAL FIRE - OFFICE OF THE STATE FIRE MARSHAL

## Information Bulletin 21-007

Issued: September 20, 2021

### DEFENSIBLE SPACE INSPECTION REQUESTS

As They Relate to Real Estate Transactions

#### PURPOSE

Assembly Bill 38 (Wood, 2019) "Fire safety: low-cost retrofits: regional capacity review: wildfire mitigation", modified the statutes for real estate disclosures. CAL FIRE-Office of the State Fire Marshal (OSFM) is providing this Information Bulletin to provide guidance for the defensible space inspection process as it relates to CIV 1102.19, enacted by the Assembly Bill.

#### OVERVIEW

As of July 1, 2021, California Civil Code Section 1102.19 requires a seller of real property located in a High or Very High Fire Hazard Severity Zone (FHSZ) within the State Responsibility Area (SRA) or Local Responsibility Area (LRA), to provide the buyer with documentation stating the property is in compliance with the requirements of Public Resources Code (PRC) Section 4291 for properties within the SRA or local vegetation management ordinances for properties within jurisdictions (SRA or LRA) that have enacted an ordinance requiring an owner to achieve compliance with PRC 4291 or Government Code 51182. The law also requires that if documentation demonstrating compliance cannot be obtained by the close of escrow, a written agreement showing that the buyer agrees to obtain documentation of compliance to either PRC 4291 for properties within the SRA, or a local ordinance for properties within jurisdictions that have enacted an ordinance, within one year of the close of escrow.

#### FREQUENTLY ASKED QUESTIONS

##### How do I determine if my property requires an inspection?

- Property owners or their agent should contact their local fire department to find out whether the property requires an inspection.
- If the property is within the SRA, an inspection is required in both the High and Very High Fire Hazard Severity Zones.
  - You can use the [Fire Hazard Severity Zone map](https://egis.fire.ca.gov/FHSZ/) to locate your property and determine if your home is in one of these zones.  
(<https://egis.fire.ca.gov/FHSZ/>)





## CAL FIRE - OFFICE OF THE STATE FIRE MARSHAL

### Information Bulletin 21-007

---

#### **How do I determine if there are local vegetation management ordinances that might affect the process?**

- Your local fire department and/or [local government](#) offices would be able to advise you regarding local ordinances that would affect your transaction. (<https://library.municode.com/ca>)

#### **Who conducts the inspections?**

- In the Very High FHSZ in the LRA, the seller shall request a defensible space compliance inspection from the local agency.
- In the High or Very High FHSZ in the SRA, if a local jurisdiction **HAS** enacted a defensible space/vegetation management ordinance, the seller shall request a defensible space compliance inspection from the local agency.
- In the High or Very High FHSZ in the SRA, if a local jurisdiction **HAS NOT** enacted a defensible space/vegetation management ordinance, the seller shall request a defensible space compliance inspection from CAL FIRE by using the inspection request feature at <https://www.fire.ca.gov/dspace>.

#### **What if the seller had received an inspection recently?**

- The seller shall provide the buyer with documentation of compliance with the local vegetation management ordinance from a local agency or PRC 4291 from CAL FIRE obtained in the 6-month period preceding the date the seller enters into a transaction to sell the real property.

#### **What if the seller cannot obtain the required documentation before close of escrow?**

- If the seller has not obtained documentation of compliance with the local vegetation management ordinance from a local agency or PRC 4291, the seller and buyer shall enter into a written agreement whereby the buyer agrees to obtain documentation of compliance with the local vegetation management ordinance or PRC 4291 within one year of the date of close of escrow.

#### **What constitutes “documentation of compliance?”**

- In the case of property within the SRA where there is no local vegetation management ordinance, CAL FIRE supplies the property owner with a hard copy or electronic PDF copy of the Notice of Defensible Space Inspection (LE-100a) form.



## **CAL FIRE - OFFICE OF THE STATE FIRE MARSHAL**

### **Information Bulletin 21-007**

---

#### **What if a property is inspected and is not in compliance with defensible space requirements?**

- The property owner will need to perform the necessary wildfire protection measures as specified within the inspection documentation and have the property inspected again prior to escrow or the buyer must agree to achieve compliance within a year as stated above.

#### **What if the subject property doesn't include the totality of area needing inspection? Meaning what if part of the 100ft inspection from the structure is on an adjacent, non-transactional property?**

- From the perspective of PRC 4291, the inspection ends at the property line. If the property is located within a jurisdiction that has enacted a local vegetation management ordinance, then the property must comply with the ordinance.

For information on CAL FIRE's Defensible Space Program visit:

<https://www.fire.ca.gov/dspace>

OPINION > COMMENTARY

## Marin Voice: Wildfire authority adapting to new paradigm of preparedness



Defensible space inspectors with the Marin Wildfire Prevention Authority inspect the area around a home in Inverness on Thursday, August 12, 2021. (Sherry LaVars/Marin Independent Journal)

By **BRUCE GOINES** |

PUBLISHED: October 2, 2021 at 1:44 p.m. | UPDATED: October 2, 2021 at 4:06 p.m.



As president of the Marin Wildfire Prevention Authority, I know these dramatic new conditions underscore Marin's need to get better prepared for wildfires.

In June, I asked other experts to join me to look at vegetation health in the Indian Valley Preserve. We found bay and madrone trees abnormally changing color, losing leaves and struggling. In other areas of Marin, vegetation is stressed and dying, displaying colors and behavior never seen before. Moisture in Mount Tamalpais' chaparral is dramatically below normal and will drop even further as we enter the height of fire season. These transformations are all around us.

According to landscape advisor Steven Swain, "Marin forests are changing before our very eyes."

Marin is not alone. Western forests are drought stressed and losing vigor, mutating from green to yellow to brown. This leads to vegetation becoming drier than normal, increased dead wood and leaf loss — adding to ground fuel. These conditions exponentially increase the risks of extreme wildfires.

Why is this happening? California has experienced a series of extreme droughts starting in 1976-1977 followed by more during the 1980s, 1990s and 2000s. We are now in the worst drought in 140 years, with Marin receiving less than 40% of its average annual rainfall last season following a dry winter.

These droughts, along with increasing temperatures, lower humidity and decades of fire suppression, have led to enormous, unprecedented wildfires, with faster rates of spread that are much more difficult to control. The last five years has witnessed the most extreme wildfires (along with thousands of other fires) in California's history:

- 2017: Tubbs Fire, destroying parts of the North Bay, killing 22 people
- 2018: Mendocino Complex Fire (459,123 acres) and Camp Fire, destroying the town of Paradise and killing 85 people (153,336 acres)
- 2020: A record 4 million acres burned, including the August Complex Fire (more than 1 million acres) along with Glass, Woodward, Walbridge and Creek fires
- 2021: The Dixie (963,276 acres) and Caldor (219,267 acres) fires are still burning

Given today's unprecedented fuel conditions, fire modeling systems cannot keep up. We have entered a new paradigm, which underscores the critical importance



Vegetation management is one of the most effective tools to prepare for wildfires: it slows the spread, buys time to complete evacuations and gives firefighters a better chance. Examples of successful vegetation management projects include:

- Caldor Fire: Flame lengths dropped from 150 feet to 15 feet when the front entered a treated forest landscape in South Lake Tahoe
- Creek Fire: When fire reached treated landscape (near Shaver Lake in Fresno County), the flames rapidly changed behavior, reducing their intensity
- San Rafael Hill: A recent fire was stopped when it reached a shaded fuel break that MWPA supported

Approved by voters in 2020, the wildfire authority and its 17 member agencies are working on more than 100 vegetation management projects. They include countywide evacuation route clearing and strategic goat grazing. MWPA sponsored more than 5,000 curbside pickups from its “chipper day” program. It has conducted more than 23,000 home inspections to show homeowners how to create defensible space and harden their homes.

One Tam (a partnership of Mount Tam stakeholders) has taken the innovative step of applying for an emergency grant from NASA to monitor Marin’s forest health. County Fire Chief Jason Weber commends this approach: “New information will allow us to better target areas more susceptible to wildfires and assess the adequacy of our mitigation efforts.”

The most critical element of our countywide approach is homeowners creating defensible space and hardening their homes. These steps work. Please visit [firesafemarin.org](https://firesafemarin.org) to learn more about what you can do.

Our new paradigm requires all of us to prepare for wildfires.

*Bruce Goines is president of the Marin Wildfire Prevention Authority board, a member of the Novato Fire District board and a licensed forester. MWPA Board Director Julie McMillan contributed to this article.*

---

Tags: **fire, Fire prevention, Marin Voice, Marin Wildfire Prevention Authority, Mount Tamalpais.**

---





## **NEXT GENERATION PROJECT**

### **September 2021 Governing Board UPDATE:**

- **Assistance to Firefighters Grant**

The radio distribution and installation process for MERA Member Agencies covered under the Assistance to Firefighters Grant is successfully coming to a close. As of September 14, 2021, the final mobile radio installations are being scheduled, completing a six-month effort to distribute all new Next Gen System portable and mobile MERA radios to our fire member agencies. There are a small number of vehicles that are currently out of the county, with alternative arrangements being made to accommodate them. The new Wi-Fi reprogramming feature, which is operational at the installation site, has already proven to be a significant time saver when radios need updated programming.

- **Nokia System Staging**

The Nokia System Staging has been successfully completed. Nokia staging included 8 testing areas of normal operations, as well as failure modes and multi-hour tests of data transmission quality over several different paths. This also included verification of power levels and assigned frequencies on all the assigned equipment. The completion of this process resulted in the network equipment being shipped to Marin and MERA receiving the milestone invoices of the original contract and for Contract Change Order #8, totaling \$8,717,920.44. This is MERA's single largest payment to Motorola for the Next Gen project.

- **MERA Site Construction**

MERA Site construction is underway. Fidato, the construction firm awarded Bid Package #1 and Bid Package #1A, has begun working onsite at Mt. Barnabe, Civic Center, EOF, Stewarts Point, Mt. Tiburon, and Dollar Hill. Bid Package #2, which includes Big Rock, San Pedro, and Sonoma Mountain will be going out to bid next.

**Our MERA team relies on the input and participation of all our 25 member agencies! Please be sure to share the above Project update with others at your agency.**

Questions? Contact Deputy Executive Officer for the Next Gen System David Jeffries at [dave@jeffriespsc.com](mailto:dave@jeffriespsc.com).

#### **MARIN EMERGENCY RADIO AUTHORITY**

c/o Town of Corte Madera  
300 Tamalpais Drive  
Corte Madera, CA 94925  
Phone: 415.927.5050  
[WWW.MERAONLINE.ORG](http://WWW.MERAONLINE.ORG)

# Kentfield FPD

Kentfield, CA

This report was generated on 10/5/2021 12:09:16 PM



## Hours Worked per Activity Code for Personnel for Date Range

Personnel: All Personnel | Roster Activity Code(s): OT - Overtime, OT - ACP - Overtime - Acting Captain, OT - ACP - SEPARATE CHECK - OT-ACP-Overtime Acting Captain-Sep Check, OT - CM - OT-Central Marin, OT - CM SEPARATE CHECK - OT-Central Marin Separate Check and 7 more | Start Date: 09/01/2021 | End Date: 09/30/2021

| ROSTER                   | STATION            | APP.  | BEGIN              | END                | TIME (HRS) | NOTES                         |
|--------------------------|--------------------|-------|--------------------|--------------------|------------|-------------------------------|
| <b>Beltramo, Anthony</b> | <b>ID: 3242</b>    |       |                    |                    |            |                               |
| OT - Overtime            |                    |       |                    |                    |            |                               |
| A1                       | 17 - Head Quarters | O2615 | 9/2/2021 07:00:00  | 9/3/2021 07:00:00  | 24         | OES -Dixie Fire               |
| A1                       | 17 - Head Quarters | E17   | 9/8/2021 07:00:00  | 9/9/2021 07:00:00  | 24         | Covering Tescalco OOC         |
| A1                       | 17 - Head Quarters | E17   | 9/14/2021 07:00:00 | 9/15/2021 07:00:00 | 24         | Cover Tescalco OOC Dixie Fire |

[Beltramo, Anthony] OT - Overtime 72

### OT - COMP - Overtime - To Comp. Time

|    |                    |            |                   |                   |      |  |
|----|--------------------|------------|-------------------|-------------------|------|--|
| A2 | 17 - Head Quarters | O2615      | 9/3/2021 07:00:00 | 9/3/2021 20:30:00 | 13.5 | 0700-1600= 9 OT Hours * 1.5 =13.5 Comp Time Hours; OES OOC assigned to the Dixie Fire. |
| A2 | UNASSIGNED         | UNASSIGNED | 9/9/2021 07:00:00 | 9/9/2021 12:15:00 | 5.25 | T17 to ALCO garage<br>0700-1030 = 3.5 * 1.5 = 5.25                                     |

[Beltramo, Anthony] OT - COMP - Overtime - To Comp. Time 18.75

**[Beltramo, Anthony] Total Hours Worked: 90.75**

|                       |                    |     |                   |                    |    |                              |
|-----------------------|--------------------|-----|-------------------|--------------------|----|------------------------------|
| <b>Bridges, Bryan</b> | <b>ID: 1115</b>    |     |                   |                    |    |                              |
| OT - Overtime         |                    |     |                   |                    |    |                              |
| A2                    | 17 - Head Quarters | E17 | 9/3/2021 07:00:00 | 9/4/2021 07:00:00  | 24 | Cover OES crew swap          |
| C1                    | 17 - Head Quarters | E17 | 9/6/2021 07:00:00 | 9/7/2021 07:00:00  | 24 | Covering Beltramo's vacation |
| A2                    | 17 - Head Quarters | E17 | 9/9/2021 07:00:00 | 9/10/2021 07:00:00 | 24 | Cover OES OOC                |

[Bridges, Bryan] OT - Overtime 72

Hours are calculated from Begin and End times in the Roster. Archived Rosters are not included.



| ROSTER                               | STATION            | APP. | BEGIN              | END                | TIME (HRS)  | NOTES  |
|--------------------------------------|--------------------|------|--------------------|--------------------|---|--|
| OT - COMP - Overtime - To Comp. Time |                    |      |                    |                    |   |  |
| A2                                   | 17 - Head Quarters | E17  | 9/15/2021 00:00:00 | 9/16/2021 12:00:00 | 36  | 0700-0700 = 24 OT Hours * 1.5 = 36<br>Comp Time Hours; Cover OES OOC |
|                                      |                    |      |                    |                    | [Bridges, Bryan] OT - COMP - Overtime - To Comp. Time | 36   |
|                                      |                    |      |                    |                    | <b>[Bridges, Bryan] Total Hours Worked:</b>           | <b>108</b>   |

| <b>Garcia , Anthony</b> | <b>ID: 1362</b>    |       |                    |                    |   |                                     |
|-------------------------|--------------------|-------|--------------------|--------------------|---|-------------------------------------|
| OT - Overtime           |                    |       |                    |                    |   |                                     |
| A1                      | 17 - Head Quarters | O2615 | 9/2/2021 07:00:00  | 9/3/2021 07:00:00  | 24  | OES -Dixie Fire                     |
| A2                      | 17 - Head Quarters | O2615 | 9/3/2021 07:00:00  | 9/3/2021 20:00:00  | 13  | OES OOC assigned to the Dixie Fire. |
| A1                      | 17 - Head Quarters | E17   | 9/8/2021 07:00:00  | 9/9/2021 07:00:00  | 24  | Covering Viau OOC                   |
| A1                      | 17 - Head Quarters | E17   | 9/14/2021 07:00:00 | 9/15/2021 07:00:00 | 24  | Cover Viau OOC Dixie Fire           |
|                         |                    |       |                    |                    | [Garcia , Anthony] OT - Overtime              | 85                                  |
|                         |                    |       |                    |                    | <b>[Garcia , Anthony] Total Hours Worked:</b> | <b>85</b>                           |

| <b>Glenn , David</b>       | <b>ID: 1390</b>    |     |                    |                    |  |   |
|----------------------------|--------------------|-----|--------------------|--------------------|--|---|
| OT - CM - OT-Central Marin |                    |     |                    |                    |  |   |
| A2                         | 17 - Head Quarters | B17 | 9/3/2021 07:00:00  | 9/4/2021 07:00:00  | 24   | Cover Cobb OOC  |
| A2                         | 17 - Head Quarters | B17 | 9/9/2021 07:00:00  | 9/10/2021 07:00:00 | 24   | Cover BC Cobb   |
| C1                         | 17 - Head Quarters | B17 | 9/12/2021 07:00:00 | 9/12/2021 15:00:00 | 8  | Cover BC Reese Vac Leave<br>8hr 0700 to 1500<br>CMD OT on Reg Check |
| A2                         | 17 - Head Quarters | B17 | 9/15/2021 07:00:00 | 9/16/2021 07:00:00 | 24   | BC Cobb VL  |
| A2                         | 17 - Head Quarters | B17 | 9/21/2021 07:00:00 | 9/22/2021 07:00:00 | 24   | Cover BC Cobb Fed Time<br>24hr 0700 to 0700<br>CMD OT on Reg Check  |
| C1                         | 17 - Head Quarters | B17 | 9/24/2021 07:00:00 | 9/25/2021 07:00:00 | 24   | Covering BC Reese   |
|                            |                    |     |                    |                    | [Glenn , David] OT - CM - OT-Central Marin | 128   |

Hours are calculated from Begin and End times in the Roster. Archived Rosters are not included.





| ROSTER                               | STATION    | APP.       | BEGIN              | END                | TIME (HRS) | NOTES  |
|--------------------------------------|------------|------------|--------------------|--------------------|------------|--|
| OT - COMP - Overtime - To Comp. Time |            |            |                    |                    |            |  |
| C2                                   | UNASSIGNED | UNASSIGNED | 9/13/2021 10:00:00 | 9/13/2021 11:30:00 | 1.5        | 1000-1100 = 1 OT Hour *1.5 = 1.5 Comp Time ; Kentfield School District Safety Committee Meeting Via Zoom |

[Glenn , David] OT - COMP - Overtime - To Comp. Time 1.5

| OT - Overtime |                    |     |                    |                    |    |  |
|---------------|--------------------|-----|--------------------|--------------------|----|--|
| C2            | 17 - Head Quarters | B17 | 9/25/2021 18:00:00 | 9/26/2021 07:00:00 | 13 | OOO Response STEN ST 2140 C Fawn Fire 1800-0700 13hr |
| A1            | 17 - Head Quarters | B17 | 9/26/2021 07:00:00 | 9/27/2021 07:00:00 | 24 | OOO Response STEN ST 2140 C Fawn Fire                |
| A2            | 17 - Head Quarters | B17 | 9/27/2021 07:00:00 | 9/28/2021 07:00:00 | 24 | OOO Response STEN ST 2140 C Fawn Fire                |
| C1            | 17 - Head Quarters | B17 | 9/30/2021 07:00:00 | 10/1/2021 07:00:00 | 24 | OOO STL for 2140C assigned to the Windy Fire.        |

[Glenn , David] OT - Overtime 85

**[Glenn , David] Total Hours Worked: 214.5**

|                           |                 |
|---------------------------|-----------------|
| <b>Marinoff, Thomas R</b> | <b>ID: 2495</b> |
|---------------------------|-----------------|

| OT - Overtime |                    |       |                    |                    |    |  |
|---------------|--------------------|-------|--------------------|--------------------|----|--|
| A2            | 17 - Head Quarters | O2615 | 9/3/2021 23:00:00  | 9/4/2021 07:00:00  | 8  | OES crew swap.                             |
| B1            | 17 - Head Quarters | O2615 | 9/4/2021 07:00:00  | 9/5/2021 07:00:00  | 24 | OES OOC county assigned to the Dixie Fire. |
| B2            | 17 - Head Quarters | O2615 | 9/5/2021 07:00:00  | 9/6/2021 07:00:00  | 24 | OES OOC county assigned to the Dixie Fire. |
| C1            | 17 - Head Quarters | O2615 | 9/6/2021 07:00:00  | 9/7/2021 07:00:00  | 24 | OES OOC Dixie Fire                         |
| C2            | 17 - Head Quarters | O2615 | 9/7/2021 07:00:00  | 9/8/2021 07:00:00  | 24 | OES OOC Dixie Fire                         |
| A2            | 17 - Head Quarters | O2615 | 9/9/2021 23:00:00  | 9/10/2021 07:00:00 | 8  | OES OOC assigned to the Dixie Fire.        |
| B1            | 17 - Head Quarters | O2615 | 9/10/2021 07:00:00 | 9/11/2021 07:00:00 | 24 | OES OOC assigned to the Dixie Fire.        |
| B2            | 17 - Head Quarters | O2615 | 9/11/2021 07:00:00 | 9/12/2021 07:00:00 | 24 | OES OOC assigned to the Dixie Fire.        |
| C1            | 17 - Head Quarters | O2615 | 9/12/2021 07:00:00 | 9/13/2021 07:00:00 | 24 | OES OOC Dixie Fire                         |

Hours are calculated from Begin and End times in the Roster. Archived Rosters are not included.



| ROSTER | STATION            | APP.  | BEGIN              | END                | TIME (HRS) | NOTES              |
|--------|--------------------|-------|--------------------|--------------------|------------|--------------------|
| C2     | 17 - Head Quarters | O2615 | 9/13/2021 07:00:00 | 9/14/2021 07:00:00 | 24         | OES OOC Dixie Fire |
| A1     | 17 - Head Quarters | O2615 | 9/14/2021 07:00:00 | 9/14/2021 15:00:00 | 8          | OES OOC Dixie Fire |
| C2     | 17 - Head Quarters | E17   | 9/25/2021 23:00:00 | 9/26/2021 07:00:00 | 8          |                    |

[Marinoff, Thomas R] OT - Overtime 224

OT - DBL Time - Overtime - Double Time

|    |                    |       |                    |                    |    |                                     |
|----|--------------------|-------|--------------------|--------------------|----|-------------------------------------|
| A1 | 17 - Head Quarters | O2615 | 9/14/2021 15:00:00 | 9/15/2021 07:00:00 | 16 | OES OOC assigned to the Dixie Fire. |
|----|--------------------|-------|--------------------|--------------------|----|-------------------------------------|

[Marinoff, Thomas R] OT - DBL Time - Overtime - Double Time 16

**[Marinoff, Thomas R] Total Hours Worked: 240**

|                       |                 |  |  |  |  |  |
|-----------------------|-----------------|--|--|--|--|--|
| <b>Marty , Andrew</b> | <b>ID: 1675</b> |  |  |  |  |  |
|-----------------------|-----------------|--|--|--|--|--|

OT - Overtime

|    |                    |     |                    |                    |    |                     |
|----|--------------------|-----|--------------------|--------------------|----|---------------------|
| A2 | 17 - Head Quarters | E17 | 9/3/2021 07:00:00  | 9/4/2021 07:00:00  | 24 | Cover OES crew swap |
| A2 | 17 - Head Quarters | E17 | 9/9/2021 07:00:00  | 9/10/2021 07:00:00 | 24 | Cover OES OOC       |
| A2 | 17 - Head Quarters | E17 | 9/15/2021 07:00:00 | 9/16/2021 07:00:00 | 24 | Cover OES OOC       |

[Marty , Andrew] OT - Overtime 72

**[Marty , Andrew] Total Hours Worked: 72**

|                           |                 |  |  |  |  |  |
|---------------------------|-----------------|--|--|--|--|--|
| <b>McCormack, Levon S</b> | <b>ID: 2493</b> |  |  |  |  |  |
|---------------------------|-----------------|--|--|--|--|--|

OT - Overtime

|    |                    |     |                    |                    |    |  |
|----|--------------------|-----|--------------------|--------------------|----|--|
| B2 | 17 - Head Quarters | E17 | 9/5/2021 23:00:00  | 9/6/2021 07:00:00  | 8  |  |
| A2 | 17 - Head Quarters | E17 | 9/9/2021 23:00:00  | 9/10/2021 07:00:00 | 8  |  |
| B2 | 17 - Head Quarters | E17 | 9/17/2021 23:00:00 | 9/18/2021 07:00:00 | 8  |  |
| B2 | 17 - Head Quarters | E17 | 9/23/2021 23:00:00 | 9/24/2021 07:00:00 | 8  |  |
| B1 | 17 - Head Quarters | E17 | 9/28/2021 07:00:00 | 9/29/2021 07:00:00 | 24 |  |

[McCormack, Levon S] OT - Overtime 56

**[McCormack, Levon S] Total Hours Worked: 56**

|                        |                 |  |  |  |  |  |
|------------------------|-----------------|--|--|--|--|--|
| <b>McDonald, Ian P</b> | <b>ID: 2492</b> |  |  |  |  |  |
|------------------------|-----------------|--|--|--|--|--|

OT - Overtime

|    |                    |     |                    |                    |   |  |
|----|--------------------|-----|--------------------|--------------------|---|--|
| A2 | 17 - Head Quarters | E17 | 9/3/2021 23:00:00  | 9/4/2021 07:00:00  | 8 |  |
| B2 | 17 - Head Quarters | E17 | 9/11/2021 23:00:00 | 9/12/2021 07:00:00 | 8 |  |

Hours are calculated from Begin and End times in the Roster. Archived Rosters are not included.



| ROSTER | STATION            | APP. | BEGIN              | END                | TIME (HRS) | NOTES |
|--------|--------------------|------|--------------------|--------------------|------------|-------|
| A1     | 17 - Head Quarters | E17  | 9/14/2021 07:00:00 | 9/15/2021 07:00:00 | 24         |       |
| A1     | 17 - Head Quarters | E17  | 9/20/2021 23:00:00 | 9/21/2021 07:00:00 | 8          |       |
| A2     | 17 - Head Quarters | E17  | 9/21/2021 07:00:00 | 9/22/2021 07:00:00 | 24         |       |
| A2     | 17 - Head Quarters | E17  | 9/27/2021 23:00:00 | 9/28/2021 07:00:00 | 8          |       |

[McDonald, Ian P] OT - Overtime 80

**[McDonald, Ian P] Total Hours Worked: 80**

|                               |                 |
|-------------------------------|-----------------|
| <b>McKnight , Christopher</b> | <b>ID: 1713</b> |
|-------------------------------|-----------------|

OT - Overtime

|    |                    |       |                   |                   |    |                                     |
|----|--------------------|-------|-------------------|-------------------|----|-------------------------------------|
| A1 | 17 - Head Quarters | O2615 | 9/2/2021 07:00:00 | 9/3/2021 07:00:00 | 24 | OES -Dixie Fire                     |
| A2 | 17 - Head Quarters | O2615 | 9/3/2021 07:00:00 | 9/3/2021 20:00:00 | 13 | OES OOC assigned to the Dixie Fire. |
| A1 | 17 - Head Quarters | E17   | 9/8/2021 07:00:00 | 9/9/2021 07:00:00 | 24 | Covering Nelson OOC                 |

[McKnight , Christopher] OT - Overtime 61

OT - SEPARATE CHECK - Overtime - Separate Check

|    |                    |     |                    |                    |    |                             |
|----|--------------------|-----|--------------------|--------------------|----|-----------------------------|
| A1 | 17 - Head Quarters | E17 | 9/14/2021 07:00:00 | 9/15/2021 07:00:00 | 24 | Cover Nelson OOC Dixie Fire |
|----|--------------------|-----|--------------------|--------------------|----|-----------------------------|

[McKnight , Christopher] OT - SEPARATE CHECK - Overtime - Separate Check 24

**[McKnight , Christopher] Total Hours Worked: 85**

|                        |                 |
|------------------------|-----------------|
| <b>Nelson, Zachary</b> | <b>ID: 1782</b> |
|------------------------|-----------------|

OT - Overtime

|    |                    |       |                    |                    |      |  |
|----|--------------------|-------|--------------------|--------------------|------|--|
| B1 | 17 - Head Quarters | O2615 | 9/4/2021 07:00:00  | 9/5/2021 07:00:00  | 24   | OES OOC county assigned to the Dixie Fire. |
| B2 | 17 - Head Quarters | O2615 | 9/5/2021 07:00:00  | 9/6/2021 07:00:00  | 24   | OES OOC county assigned to the Dixie Fire. |
| C1 | 17 - Head Quarters | O2615 | 9/6/2021 07:00:00  | 9/7/2021 07:00:00  | 24   | OES OOC Dixie Fire                         |
| C2 | 17 - Head Quarters | O2615 | 9/7/2021 07:00:00  | 9/8/2021 07:00:00  | 24   | OES OOC Dixie Fire                         |
| B1 | 17 - Head Quarters | O2615 | 9/10/2021 07:00:00 | 9/11/2021 07:00:00 | 24   | OES OOC assigned to the Dixie Fire.        |
| B2 | 17 - Head Quarters | O2615 | 9/11/2021 07:00:00 | 9/12/2021 07:00:00 | 24   | OES OOC assigned to the Dixie Fire.        |
| C1 | 17 - Head Quarters | O2615 | 9/12/2021 07:00:00 | 9/13/2021 07:00:00 | 24   | OES OOC Dixie Fire                         |
| C2 | 17 - Head Quarters | O2615 | 9/13/2021 07:00:00 | 9/14/2021 07:00:00 | 24   | OES OOC Dixie Fire                         |
| B1 | 17 - Head Quarters | O2615 | 9/16/2021 07:00:00 | 9/16/2021 19:30:00 | 12.5 | OES OOC assigned to the Dixie Fire.        |

Hours are calculated from Begin and End times in the Roster. Archived Rosters are not included.



| ROSTER | STATION    | APP.       | BEGIN              | END                | TIME (HRS) | NOTES   |
|--------|------------|------------|--------------------|--------------------|------------|---|
| B1     | UNASSIGNED | UNASSIGNED | 9/22/2021 07:00:00 | 9/22/2021 18:30:00 | 11.5       | Meeting with Hi-Tech regarding the Type 3 build |

[Nelson, Zachary] OT - Overtime 216

**[Nelson, Zachary] Total Hours Worked: 216**

|                    |                 |  |  |  |  |  |
|--------------------|-----------------|--|--|--|--|--|
| <b>Neve, Mitch</b> | <b>ID: 3243</b> |  |  |  |  |  |
|--------------------|-----------------|--|--|--|--|--|

OT - Overtime

|    |                    |     |                    |                    |    |   |
|----|--------------------|-----|--------------------|--------------------|----|---|
| C2 | 17 - Head Quarters | E17 | 9/1/2021 07:00:00  | 9/2/2021 07:00:00  | 24 | OT coverage - OES OOC   |
| A2 | 17 - Head Quarters | E17 | 9/3/2021 07:00:00  | 9/4/2021 07:00:00  | 24 | Cover OES crew swap   |
| A2 | 17 - Head Quarters | E17 | 9/9/2021 07:00:00  | 9/10/2021 07:00:00 | 24 | Cover OES OOC   |
| A2 | 17 - Head Quarters | E17 | 9/15/2021 07:00:00 | 9/16/2021 07:00:00 | 24 | Cover OES OOC   |
| A1 | 17 - Head Quarters | E17 | 9/26/2021 07:00:00 | 9/27/2021 07:00:00 | 24 | Nelson bumped up to AC covering Viau. Neve to fill Nelson spot. |

[Neve, Mitch] OT - Overtime 120

**[Neve, Mitch] Total Hours Worked: 120**

|                      |                 |  |  |  |  |  |
|----------------------|-----------------|--|--|--|--|--|
| <b>Pasero, Larry</b> | <b>ID: 3307</b> |  |  |  |  |  |
|----------------------|-----------------|--|--|--|--|--|

OT - Overtime

|    |                    |            |                   |                    |    |  |
|----|--------------------|------------|-------------------|--------------------|----|--|
| C2 | 17 - Head Quarters | P-17       | 9/1/2021 16:00:00 | 9/1/2021 17:00:00  | 1  | Caldor Incident O-20461 Released from Caldor |
| B2 | UNASSIGNED         | UNASSIGNED | 9/5/2021 19:00:00 | 9/6/2021 07:00:00  | 12 | Return to Caldor Incident IMT2 O-20761.39    |
| C1 | UNASSIGNED         | UNASSIGNED | 9/6/2021 07:00:00 | 9/7/2021 07:00:00  | 24 | Caldor Incident IMT2 O-20761.39              |
| C2 | UNASSIGNED         | UNASSIGNED | 9/7/2021 17:00:00 | 9/8/2021 07:00:00  | 14 | Caldor Incident IMT2 O-20761.39              |
| A1 | UNASSIGNED         | UNASSIGNED | 9/8/2021 17:00:00 | 9/9/2021 07:00:00  | 14 | OOC assigned to the Caldor Fire O-20761.39   |
| A2 | 17 - Head Quarters | P-17       | 9/9/2021 17:00:00 | 9/10/2021 07:00:00 | 14 | OOC assigned to the Caldor Fire O-20761.39   |

Hours are calculated from Begin and End times in the Roster. Archived Rosters are not included.



| ROSTER | STATION            | APP.       | BEGIN              | END                | TIME (HRS) | NOTES                                      |
|--------|--------------------|------------|--------------------|--------------------|------------|--|
| B1     | 17 - Head Quarters | P-17       | 9/10/2021 07:00:00 | 9/11/2021 07:00:00 | 24         | OOO assigned to the Caldor Fire O-20761.39 |
| B2     | 17 - Head Quarters | P-17       | 9/11/2021 07:00:00 | 9/12/2021 07:00:00 | 24         | OOO assigned to the Caldor Fire O-20761.39 |
| C1     | UNASSIGNED         | UNASSIGNED | 9/12/2021 07:00:00 | 9/13/2021 07:00:00 | 24         | OOO assigned to the Caldor Fire O-20761.39 |
| C2     | UNASSIGNED         | UNASSIGNED | 9/13/2021 17:00:00 | 9/14/2021 07:00:00 | 14         | OOO assigned to the Caldor Fire O-20761.39 |
| A1     | UNASSIGNED         | UNASSIGNED | 9/14/2021 17:00:00 | 9/15/2021 07:00:00 | 14         | OOO assigned to the Caldor Fire O-20761.39 |
| A2     | 17 - Head Quarters | P-17       | 9/15/2021 17:00:00 | 9/16/2021 07:00:00 | 14         | OOO assigned to the Caldor Fire O-20761.39 |
| B1     | 17 - Head Quarters | P-17       | 9/16/2021 17:00:00 | 9/17/2021 07:00:00 | 14         | OOO assigned to the Caldor Fire O-20761.39 |
| B2     | UNASSIGNED         | UNASSIGNED | 9/17/2021 07:00:00 | 9/18/2021 07:00:00 | 24         | OOO assigned to the Caldor Fire O-20761.39 |

[Pasero, Larry] OT - Overtime 231

OT - COMP - Overtime - To Comp. Time

|    |            |            |                    |                    |      |  |
|----|------------|------------|--------------------|--------------------|------|--|
| C1 | UNASSIGNED | UNASSIGNED | 9/18/2021 07:00:00 | 9/18/2021 23:30:00 | 16.5 | OOO assigned to the Caldor Fire O-20761.39.<br>End of assignment 09/18/21 1800 hrs.<br>0700-1800 = 11 hrs *x 1.5= 17.5 |
|----|------------|------------|--------------------|--------------------|------|--|

[Pasero, Larry] OT - COMP - Overtime - To Comp. Time 16.5

**[Pasero, Larry] Total Hours Worked: 247.5**

| Phillips, Roderick J |                    | ID: 2494 |                    |                    |    |                                     |
|----------------------|--------------------|----------|--------------------|--------------------|----|-------------------------------------|
| OT - Overtime        |                    |          |                    |                    |    |                                     |
| A1                   | 17 - Head Quarters | O2615    | 9/2/2021 23:00:00  | 9/3/2021 07:00:00  | 8  | OES -Dixie Fire                     |
| A2                   | 17 - Head Quarters | O2615    | 9/3/2021 07:00:00  | 9/3/2021 20:00:00  | 13 | OES OOC assigned to the Dixie Fire. |
| C1                   | 17 - Head Quarters | E17      | 9/6/2021 07:00:00  | 9/7/2021 07:00:00  | 24 |                                     |
| C2                   | 17 - Head Quarters | E17      | 9/7/2021 07:00:00  | 9/8/2021 07:00:00  | 24 |                                     |
| C2                   | 17 - Head Quarters | E17      | 9/13/2021 23:00:00 | 9/14/2021 07:00:00 | 8  |                                     |
| C2                   | 17 - Head Quarters | E17      | 9/25/2021 23:00:00 | 9/26/2021 07:00:00 | 8  |                                     |

[Phillips, Roderick J] OT - Overtime 85

**[Phillips, Roderick J] Total Hours Worked: 85**

Hours are calculated from Begin and End times in the Roster. Archived Rosters are not included.



| ROSTER                   | STATION            | APP.            | BEGIN              | END                | TIME (HRS) | NOTES                                      |
|--------------------------|--------------------|-----------------|--------------------|--------------------|------------|--|
| <b>Tescallo, Anthony</b> |                    | <b>ID: 2081</b> |                    |                    |            |  |
| OT - Overtime            |                    |                 |                    |                    |            |  |
| C2                       | 17 - Head Quarters | E17             | 9/1/2021 07:00:00  | 9/2/2021 07:00:00  | 24         | OT-coverage OES OOC                        |
| B1                       | 17 - Head Quarters | O2615           | 9/4/2021 07:00:00  | 9/5/2021 07:00:00  | 24         | OES OOC county assigned to the Dixie Fire. |
| B2                       | 17 - Head Quarters | O2615           | 9/5/2021 07:00:00  | 9/6/2021 07:00:00  | 24         | OES OOC county assigned to the Dixie Fire. |
| C1                       | 17 - Head Quarters | O2615           | 9/6/2021 07:00:00  | 9/7/2021 07:00:00  | 24         | OES OOC Dixie Fire                         |
| C2                       | 17 - Head Quarters | O2615           | 9/7/2021 07:00:00  | 9/8/2021 07:00:00  | 24         | OES OOC Dixie Fire                         |
| B1                       | 17 - Head Quarters | O2615           | 9/10/2021 07:00:00 | 9/11/2021 07:00:00 | 24         | OES OOC assigned to the Dixie Fire.        |
| B2                       | 17 - Head Quarters | O2615           | 9/11/2021 07:00:00 | 9/12/2021 07:00:00 | 24         | OES OOC assigned to the Dixie Fire.        |
| C1                       | 17 - Head Quarters | O2615           | 9/12/2021 07:00:00 | 9/13/2021 07:00:00 | 24         | OES OOC Dixie Fire                         |
| C2                       | 17 - Head Quarters | O2615           | 9/13/2021 07:00:00 | 9/14/2021 07:00:00 | 24         | OES OOC Dixie Fire                         |
| B1                       | 17 - Head Quarters | O2615           | 9/16/2021 07:00:00 | 9/16/2021 19:30:00 | 12.5       | OES OOC assigned to the Dixie Fire.        |

[Tescallo, Anthony] OT - Overtime 228.5

**[Tescallo, Anthony] Total Hours Worked: 228.5**

|                    |                    |                 |                    |                    |    |  |
|--------------------|--------------------|-----------------|--------------------|--------------------|----|--|
| <b>Viau , Kris</b> |                    | <b>ID: 2133</b> |                    |                    |    |  |
| OT - Overtime      |                    |                 |                    |                    |    |  |
| C2                 | 17 - Head Quarters | E17             | 9/1/2021 07:00:00  | 9/2/2021 07:00:00  | 24 | OT - coverage OES OOC                      |
| B1                 | 17 - Head Quarters | O2615           | 9/4/2021 07:00:00  | 9/5/2021 07:00:00  | 24 | OES OOC county assigned to the Dixie Fire. |
| B2                 | 17 - Head Quarters | O2615           | 9/5/2021 07:00:00  | 9/6/2021 07:00:00  | 24 | OES OOC county assigned to the Dixie Fire. |
| C1                 | 17 - Head Quarters | O2615           | 9/6/2021 07:00:00  | 9/7/2021 07:00:00  | 24 | OES OOC Dixie Fire                         |
| C2                 | 17 - Head Quarters | O2615           | 9/7/2021 07:00:00  | 9/8/2021 07:00:00  | 24 | OES OOC Dixie Fire                         |
| B1                 | 17 - Head Quarters | O2615           | 9/10/2021 07:00:00 | 9/11/2021 07:00:00 | 24 | OES OOC assigned to the Dixie Fire.        |
| B2                 | 17 - Head Quarters | O2615           | 9/11/2021 07:00:00 | 9/12/2021 07:00:00 | 24 | OES OOC assigned to the Dixie Fire.        |
| C1                 | 17 - Head Quarters | O2615           | 9/12/2021 07:00:00 | 9/13/2021 07:00:00 | 24 | OES OOC Dixie Fire                         |
| C2                 | 17 - Head Quarters | O2615           | 9/13/2021 07:00:00 | 9/14/2021 07:00:00 | 24 | OES OOC Dixie Fire                         |

[Viau , Kris] OT - Overtime 216

Hours are calculated from Begin and End times in the Roster. Archived Rosters are not included.



| ROSTER                               | STATION            | APP.  | BEGIN              | END                | TIME (HRS) | NOTES   |
|--------------------------------------|--------------------|-------|--------------------|--------------------|------------|---|
| OT - COMP - Overtime - To Comp. Time |                    |       |                    |                    |            |   |
| B1                                   | 17 - Head Quarters | O2615 | 9/16/2021 01:00:00 | 9/16/2021 19:45:00 | 18.75      | 0700-1930 = 12.50 OT Hours * 1.5 = 18.75 Comp Time Hours; OES OOC assigned to the Dixie Fire. |

[Viau , Kris] OT - COMP - Overtime - To Comp. Time 18.75

**[Viau , Kris] Total Hours Worked: 234.75**

|                     |            |  |  |  |  |  |
|---------------------|------------|--|--|--|--|--|
| <b>Wilson, Jena</b> | <b>ID:</b> |  |  |  |  |  |
|---------------------|------------|--|--|--|--|--|

|                                      |            |            |                   |                   |      |   |
|--------------------------------------|------------|------------|-------------------|-------------------|------|---|
| OT - COMP - Overtime - To Comp. Time |            |            |                   |                   |      |   |
| A1                                   | UNASSIGNED | UNASSIGNED | 9/8/2021 17:00:00 | 9/8/2021 20:45:00 | 3.75 | 1700-1930 = 2.5 OT Hours * 1.5 = 3.75 Comp Time Hours |

[Wilson, Jena] OT - COMP - Overtime - To Comp. Time 3.75

**[Wilson, Jena] Total Hours Worked: 3.75**

**GRAND TOTAL OF ALL HOURS WORKED: 2166.75**

Hours are calculated from Begin and End times in the Roster. Archived Rosters are not included.



# Kentfield FPD

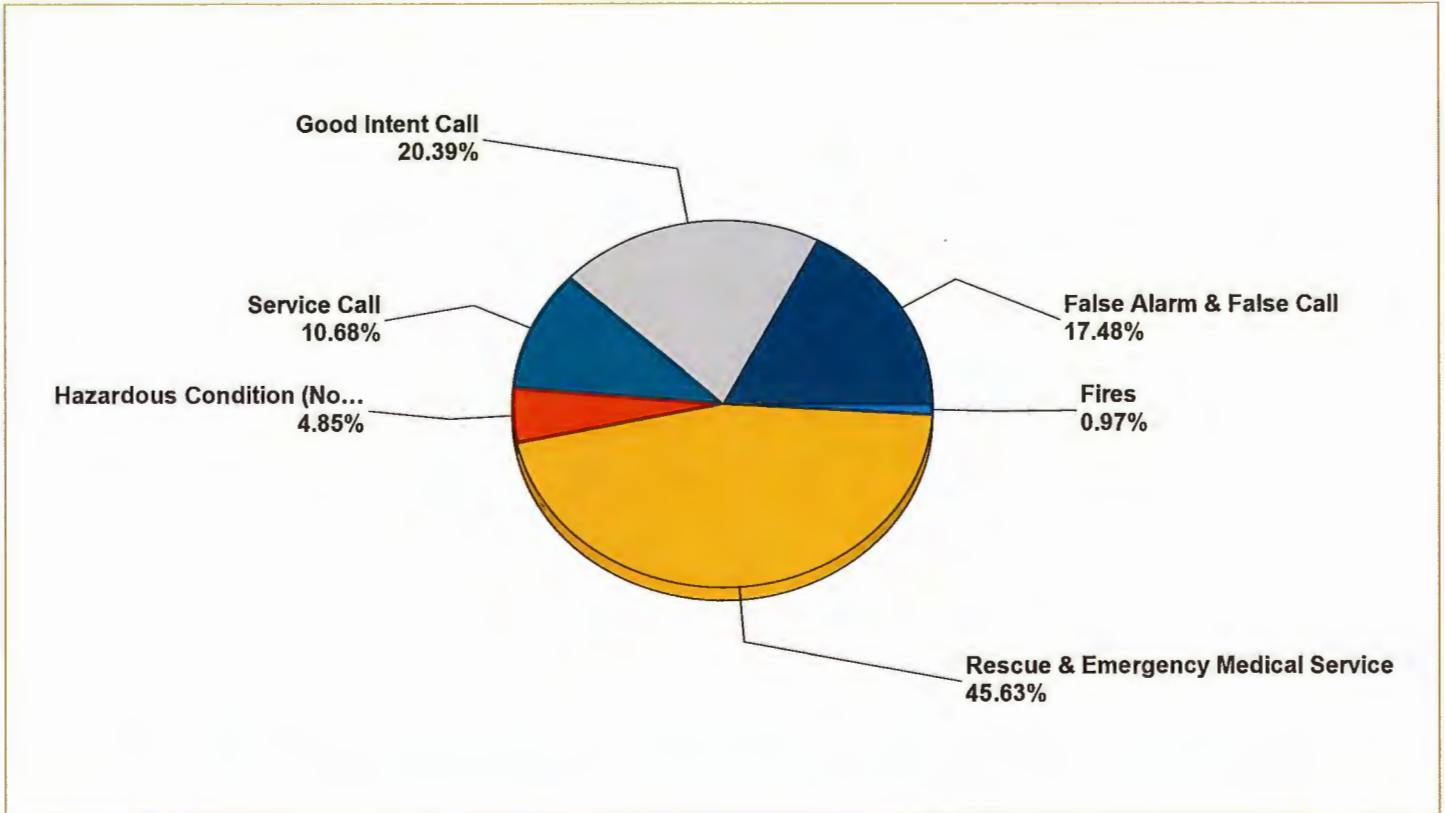
Kentfield, CA

This report was generated on 10/1/2021 10:54:00 AM



## Breakdown by Major Incident Types for Date Range

Zone(s): All Zones | Start Date: 09/01/2021 | End Date: 09/30/2021



| MAJOR INCIDENT TYPE                | # INCIDENTS | % of TOTAL  |
|------------------------------------|-------------|-------------|
| Fires                              | 1           | 0.97%       |
| Rescue & Emergency Medical Service | 47          | 45.63%      |
| Hazardous Condition (No Fire)      | 5           | 4.85%       |
| Service Call                       | 11          | 10.68%      |
| Good Intent Call                   | 21          | 20.39%      |
| False Alarm & False Call           | 18          | 17.48%      |
| <b>TOTAL</b>                       | <b>103</b>  | <b>100%</b> |

Only REVIEWED and/or LOCKED IMPORTED incidents are included. Summary results for a major incident type are not displayed if the count is zero.





### Detailed Breakdown by Incident Type

| INCIDENT TYPE  | # INCIDENTS | % of TOTAL  |
|--|-------------|-------------|
| 131 - Passenger vehicle fire                             | 1           | 0.97%       |
| 320 - Emergency medical service, other                   | 44          | 42.72%      |
| 322 - Motor vehicle accident with injuries               | 2           | 1.94%       |
| 324 - Motor vehicle accident with no injuries.           | 1           | 0.97%       |
| 440 - Electrical wiring/equipment problem, other         | 2           | 1.94%       |
| 462 - Aircraft standby                                   | 3           | 2.91%       |
| 510 - Person in distress, other                          | 1           | 0.97%       |
| 511 - Lock-out   | 2           | 1.94%       |
| 541 - Animal problem                                     | 1           | 0.97%       |
| 571 - Cover assignment, standby, moveup                  | 7           | 6.8%        |
| 600 - Good intent call, other                            | 1           | 0.97%       |
| 611 - Dispatched & cancelled en route                    | 17          | 16.5%       |
| 651 - Smoke scare, odor of smoke                         | 2           | 1.94%       |
| 652 - Steam, vapor, fog or dust thought to be smoke      | 1           | 0.97%       |
| 700 - False alarm or false call, other                   | 5           | 4.85%       |
| 733 - Smoke detector activation due to malfunction       | 3           | 2.91%       |
| 735 - Alarm system sounded due to malfunction            | 1           | 0.97%       |
| 743 - Smoke detector activation, no fire - unintentional | 4           | 3.88%       |
| 744 - Detector activation, no fire - unintentional       | 1           | 0.97%       |
| 745 - Alarm system activation, no fire - unintentional   | 4           | 3.88%       |
| <b>TOTAL INCIDENTS:</b>                                  | <b>103</b>  | <b>100%</b> |

Only REVIEWED and/or LOCKED IMPORTED incidents are included. Summary results for a major incident type are not displayed if the count is zero.



Kentfield Fire Protection District  
Warrant List  
September 2021

09/30/21

| Type                                    | Date       | Num       | Name                                    | Memo   | Split                                 | Amount             | Balance            |
|---|------------|-----------|---|--|---------------------------------------|--------------------|--------------------|
| <b>437 · Cash-Gen Ckg</b>               |            |           |   |  |                                       |                    |                    |
| Check                                   | 09/14/2021 | 805303918 | Business Card                           | 8/5/21 - 9/4/21: Pomi 7901   | -SPLIT-                               | -1,307.30          | -1,307.30          |
| Check                                   | 09/14/2021 | 805303919 | American Messaging                      | A/C #W4-106070/Inv #W4106070VI September 2021  | 2145 · Pager System                   | -23.80             | -1,331.10          |
| Check                                   | 09/14/2021 | 805303920 | Aramark Uniform Services                | (a/c #792113681) Inv #580000122881   | 2050 · Auto/Equipment Repair          | -71.11             | -1,402.21          |
| Check                                   | 09/14/2021 | 805303921 | Banner Life Insurance Company           | 181492416 - Tescallo   | 1515 · Health Insurance               | -47.32             | -1,449.53          |
| Check                                   | 09/14/2021 | 805303922 | Banshee Networks, Inc.                  | Invoice # 15024 & 15025  | 2200 · S/S-Computer                   | -1,454.24          | -2,903.77          |
| Check                                   | 09/14/2021 | 805303923 | CalPERS - OPEB                          | ID#3852809272-Kentfield Fire District OPEB   | 1560 · Other Post Employment Benefits | -34,000.00         | -36,903.77         |
| Check                                   | 09/14/2021 | 805303924 | Comcast                                 | a/c# 8155 30 002 0097986   | 2200 · S/S-Computer                   | -109.87            | -37,013.64         |
| Check                                   | 09/14/2021 | 805303925 | Corbet's                                | (A/C #4675)  | -SPLIT-                               | -22.43             | -37,036.07         |
| Check                                   | 09/14/2021 | 805303926 | Business Card                           | 8/5/21 - 9/4/21: Garcia 3779   | -SPLIT-                               | -1,971.09          | -39,007.16         |
| Check                                   | 09/14/2021 | 805303927 | Business Card                           | 8/5/21 - 9/4/21: Glenn- 8422   | -SPLIT-                               | -196.67            | -39,203.83         |
| Check                                   | 09/14/2021 | 805303928 | Business Card                           | 8/5/21 - 9/4/21: Marty 5375  | -SPLIT-                               | -178.36            | -39,382.19         |
| Check                                   | 09/14/2021 | 805303929 | Business Card                           | 8/5/21 - 9/4/21: Pasero 8438   | 2050 · Auto/Equipment Repair          | -79.91             | -39,462.10         |
| Check                                   | 09/14/2021 | 805303930 | Business Card                           | 8/5/21 - 9/4/21: Viau 7962   | -SPLIT-                               | -1,476.07          | -40,938.17         |
| Check                                   | 09/14/2021 | 805303931 | Business Card                           | 8/5/21 - 9/4/21: Wilson 3147   | -SPLIT-                               | -195.65            | -41,133.82         |
| Check                                   | 09/14/2021 | 805303932 | Diego Truck Repair, Inc.                | Invoice #62840   | 2050 · Auto/Equipment Repair          | -283.59            | -41,417.41         |
| Check                                   | 09/14/2021 | 805303933 | Forster & Kroeger Landscape Maintenance | Inv #7814  | 2150 · Prevention                     | -29,790.00         | -71,207.41         |
| Check                                   | 09/14/2021 | 805303934 | Jackson's Hardware                      | (a/c #4538) Ref # PO 8954  | 2050 · Auto/Equipment Repair          | -47.99             | -71,255.40         |
| Check                                   | 09/14/2021 | 805303935 | Kentfield Fire District Payroll Account | A/C #0507976165  | -SPLIT-                               | -204,647.22        | -275,902.62        |
| Check                                   | 09/14/2021 | 805303936 | Marin County Tax Collector              | Print Shop Services 2021-6898  | 2005 · Administrative Expense         | -25.00             | -275,927.62        |
| Check                                   | 09/14/2021 | 805303937 | Marin Garden Solutions, Inc.            | Inv # 2359   | 2055 · Building Repair                | -110.76            | -276,038.38        |
| Check                                   | 09/14/2021 | 805303938 | Marin Sanitary Service                  | Inv # 2518402_August 2021 Service  | 2125 · Garbage                        | -759.05            | -276,797.43        |
| Check                                   | 09/14/2021 | 805303939 | DNG Enterprises, Inc.                   | (a/c #3770) Inv # 634832 & 638999  | 2050 · Auto/Equipment Repair          | -103.58            | -276,901.01        |
| Check                                   | 09/14/2021 | 805303940 | NPFBA                                   | October 2021 Billing   | 1515 · Health Insurance               | -825.88            | -277,726.89        |
| Check                                   | 09/14/2021 | 805303941 | North Bay Petroleum                     | Acct 210178 / Inv #3212373   | 2135 · Gas & Oil                      | -578.62            | -278,305.51        |
| Check                                   | 09/14/2021 | 805303942 | Office Depot                            | Acct# 6011 5661 8341 8338  | 2215 · S/S-Office                     | -54.27             | -278,359.78        |
| Check                                   | 09/14/2021 | 805303943 | TK Elevator Corporation                 | Cust #144933 / Inv #3006146295   | 2055 · Building Repair                | -128.64            | -278,488.42        |
| Check                                   | 09/14/2021 | 805303944 | TargetSolutions Learning LLC            | Inv # 32622, Premier Membership Platform   | 2305 · Training                       | -1,440.00          | -279,928.42        |
| Check                                   | 09/14/2021 | 805303945 | Verizon Wireless                        | a/c #342098888-0001 / Inv #9886907046  | 2300 · Telephone                      | -165.48            | -280,093.90        |
| Check                                   | 09/28/2021 | 805303946 | AT&T 415 453 1092 859 9                 | BAN #9391050062/ Inv #17042954 - Fire Alarm #2   | 2300 · Telephone                      | -22.16             | -280,116.06        |
| Check                                   | 09/28/2021 | 805303947 | AT&T 415 453 4695 859 9                 | BAN #9391050061/ Inv #17042953 - Fire Alarm Phone #1                                     | 2300 · Telephone                      | -22.16             | -280,138.22        |
| Check                                   | 09/28/2021 | 805303948 | AT&T 415 453 7464 025 3                 | BAN #9391050059 / Inv #17042951- Main line   | 2300 · Telephone                      | -158.41            | -280,296.63        |
| Check                                   | 09/28/2021 | 805303949 | AT&T 415 453 1064 204 1                 | BAN #9391050060/ Inv #17042952 - Elevator  | 2300 · Telephone                      | -22.16             | -280,318.79        |
| Check                                   | 09/28/2021 | 805303950 | C.A.P.F.                                | October 2021 Billing   | 1515 · Health Insurance               | -324.50            | -280,643.29        |
| Check                                   | 09/28/2021 | 805303951 | Delta Dental of California              | Account #05-0190901009: Kentfield Fire District - October Coverage                       | 1515 · Health Insurance               | -3,915.34          | -284,558.63        |
| Check                                   | 09/28/2021 | 805303952 | Delta Dental of California              | Account #05-0190901009: Kentfield Fire District, James Naso- COBRA Coverage_October 2021 | 1515 · Health Insurance               | -52.67             | -284,611.30        |
| Check                                   | 09/28/2021 | 805303953 | Diego Truck Repair, Inc.                | Invoice #62929 & 63033   | 2050 · Auto/Equipment Repair          | -679.50            | -285,290.80        |
| Check                                   | 09/28/2021 | 805303954 | ECMS, Inc.                              | Inv #527936  | 4041 · C/O - PPE                      | -583.07            | -285,873.87        |
| Check                                   | 09/28/2021 | 805303955 | Golden Rule Creations                   | PO 8981 (Inv.#094988)  | 2205 · S/S-Fire Equipment             | -280.94            | -286,154.81        |
| Check                                   | 09/28/2021 | 805303956 | Kentfield Fire District Payroll Account | A/C #0507976165 -October CEPPT Contributions   | 1565 · Retirement Prefunding Contrib  | -18,750.00         | -304,904.81        |
| Check                                   | 09/28/2021 | 805303957 | Kentfield Fire District Payroll Account | A/C #0507976165  | -SPLIT-                               | -49,237.01         | -354,141.82        |
| Check                                   | 09/28/2021 | 805303958 | Kentfield Fire District Payroll Account | A/C #0507976165  | -SPLIT-                               | -172,891.06        | -527,032.88        |
| Check                                   | 09/28/2021 | 805303959 | Kentfield Prof. FF #1775                | Union Dues: 8/25/2021 - 9/21/2021  | 610 · Union Dues                      | -1,317.04          | -528,349.92        |
| Check                                   | 09/28/2021 | 805303960 | Marin Municipal Water Dist.             | (A/C 175859 & 174720)  | -SPLIT-                               | -641.18            | -528,991.10        |
| Check                                   | 09/28/2021 | 805303961 | Maze & Associates                       | Inv #42491   | 2010 · Auditor                        | -5,350.00          | -534,341.10        |
| Check                                   | 09/28/2021 | 805303962 | Connect Your Care                       | Delta Dental COBRA Coverage: September 2021  | 1515 · Health Insurance               | -6.66              | -534,347.76        |
| Check                                   | 09/28/2021 | 805303963 | Pacific Gas & Electric                  | Acct 1176933549-5 -9/23/2021   | 2130 · Gas & Electric                 | -642.31            | -534,990.07        |
| Check                                   | 09/28/2021 | 805303964 | Ricoh USA, Inc.                         | Acct #1374116-1034296USC / Inv #105410808 (Lease 07/04/2021- 10/03/2021)                 | 2215 · S/S-Office                     | -344.24            | -535,334.31        |
| Check                                   | 09/28/2021 | 805303965 | Vision Service Plan                     | Client ID #00106116-October 2021   | 1515 · Health Insurance               | -799.37            | -536,133.68        |
| Check                                   | 09/28/2021 | 805303966 | XMR Fire Emergency Services Consulting  | Inv #2021-007  | 1010 · Extra Hire                     | -1,004.00          | -537,137.68        |
| <b>Total 437 · Cash-Gen Ckg</b>         |            |           |   |  |                                       | <b>-537,137.68</b> | <b>-537,137.68</b> |
| <b>439 · Cash-Payroll</b>               |            |           |   |  |                                       |                    |                    |
| Check                                   | 09/10/2021 | Debit     | IBS                                     |  | 2005 · Administrative Expense         | -259.10            | -259.10            |
| Check                                   | 09/24/2021 | Debit     | IBS                                     |  | 2005 · Administrative Expense         | -128.40            | -387.50            |
| <b>Total 439 · Cash-Payroll</b>         |            |           |   |  |                                       | <b>-387.50</b>     | <b>-387.50</b>     |
| <b>Liabilities</b>                      |            |           |   |  |                                       |                    |                    |
| <b>565 · Amer Fnds-Invest Def</b>       |            |           |   |  |                                       |                    |                    |
| Check                                   | 09/14/2021 | 805303935 | Kentfield Fire District Payroll Account | 457 Payroll Biweekly Deduction   | 437 · Cash-Gen Ckg                    | 3,320.00           | 3,320.00           |
| Check                                   | 09/28/2021 | 805303958 | Kentfield Fire District Payroll Account | 457 Payroll Biweekly Deduction   | 437 · Cash-Gen Ckg                    | 3,320.00           | 6,640.00           |
| <b>Total 565 · Amer Fnds-Invest Def</b> |            |           |   |  |                                       | <b>6,640.00</b>    | <b>6,640.00</b>    |
| <b>610 · Union Dues</b>                 |            |           |   |  |                                       |                    |                    |
| Check                                   | 09/28/2021 | 805303959 | Kentfield Prof. FF #1775                | Union Dues: 8/25/2021 - 9/21/2021  | 437 · Cash-Gen Ckg                    | 1,317.04           | 1,317.04           |
| <b>Total 610 · Union Dues</b>           |            |           |   |  |                                       | <b>1,317.04</b>    | <b>1,317.04</b>    |
| <b>Total Liabilities</b>                |            |           |   |  |                                       | <b>7,957.04</b>    | <b>7,957.04</b>    |
| <b>Expenses</b>                         |            |           |   |  |                                       |                    |                    |
| <b>Salaries &amp; Employee Benefits</b> |            |           |   |  |                                       |                    |                    |
| Check                                   | 09/28/2021 | 805303966 | XMR Fire Emergency Services Consulting  | Inv #2021-007  | 437 · Cash-Gen Ckg                    | 1,004.00           | 1,004.00           |
| <b>Total 1010 · Extra Hire</b>          |            |           |   |  |                                       | <b>1,004.00</b>    | <b>1,004.00</b>    |

Kentfield Fire Protection District

Warrant List

September 2021

09/30/21

| Type  | Date       | Num       | Name                                    | Memo   | Split              | Amount     | Balance    |
|---|------------|-----------|---|--|--------------------|------------|------------|
| 1040 · Personnel Serv-Suspense              |            |           |   |  |                    |            |            |
| Check                                       | 09/14/2021 | 805303935 | Kentfield Fire District Payroll Account | For Payroll 9/08/2021-9/21/2021  | 437 · Cash-Gen Ckg | 177,863.53 | 177,863.53 |
| Check                                       | 09/28/2021 | 805303958 | Kentfield Fire District Payroll Account | For Payroll 9/22/2021-10/5/2021  | 437 · Cash-Gen Ckg | 145,893.29 | 323,756.82 |
| Total 1040 · Personnel Serv-Suspense        |            |           |   |  |                    | 323,756.82 | 323,756.82 |
| 1510 · FICA-Employer                        |            |           |   |  |                    |            |            |
| Check                                       | 09/28/2021 | 805303957 | Kentfield Fire District Payroll Account | Non-PERS Health Premium October 2021   | 437 · Cash-Gen Ckg | 3,034.73   | 3,034.73   |
| Total 1510 · FICA-Employer                  |            |           |   |  |                    | 3,034.73   | 3,034.73   |
| 1515 · Health Insurance                     |            |           |   |  |                    |            |            |
| Check                                       | 09/14/2021 | 805303921 | Banner Life Insurance Company           | 181492416 - Tescallo   | 437 · Cash-Gen Ckg | 47.32      | 47.32      |
| Check                                       | 09/14/2021 | 805303940 | NPFBA                                   | October 2021 Billing   | 437 · Cash-Gen Ckg | 825.88     | 873.20     |
| Check                                       | 09/28/2021 | 805303950 | C.A.P.F.                                | October 2021 Billing   | 437 · Cash-Gen Ckg | 324.50     | 1,197.70   |
| Check                                       | 09/28/2021 | 805303951 | Delta Dental of California              | Account #05-0190901009; Kentfield Fire District - October Coverage                       | 437 · Cash-Gen Ckg | 3,915.34   | 5,113.04   |
| Check                                       | 09/28/2021 | 805303952 | Delta Dental of California              | Account #05-0190901009; Kentfield Fire District, James Naso- COBRA Coverage_October 2021 | 437 · Cash-Gen Ckg | 52.67      | 5,165.71   |
| Check                                       | 09/28/2021 | 805303957 | Kentfield Fire District Payroll Account | PERS Active & Retired Health Premium October 2021  | 437 · Cash-Gen Ckg | 46,202.28  | 51,367.99  |
| Check                                       | 09/28/2021 | 805303962 | Connect Your Care                       | Delta Dental COBRA Coverage: September 2021  | 437 · Cash-Gen Ckg | 6.66       | 51,374.65  |
| Check                                       | 09/28/2021 | 805303965 | Vision Service Plan                     | Client ID #00106116-October 2021   | 437 · Cash-Gen Ckg | 799.37     | 52,174.02  |
| Total 1515 · Health Insurance               |            |           |   |  |                    | 52,174.02  | 52,174.02  |
| 1530 · Retire Employer                      |            |           |   |  |                    |            |            |
| Check                                       | 09/14/2021 | 805303935 | Kentfield Fire District Payroll Account | Safety (Classic / PEPPA) & Misc. EE/ER   | 437 · Cash-Gen Ckg | 23,204.59  | 23,204.59  |
| Check                                       | 09/28/2021 | 805303958 | Kentfield Fire District Payroll Account | Safety (Classic / PEPPA) & Misc. EE/ER   | 437 · Cash-Gen Ckg | 23,549.37  | 46,753.96  |
| Total 1530 · Retire Employer                |            |           |   |  |                    | 46,753.96  | 46,753.96  |
| 1560 · Other Post Employment Benefits       |            |           |   |  |                    |            |            |
| Check                                       | 09/14/2021 | 805303923 | CalPERS - OPEB                          | OPEB Payment   | 437 · Cash-Gen Ckg | 34,000.00  | 34,000.00  |
| Total 1560 · Other Post Employment Benefits |            |           |   |  |                    | 34,000.00  | 34,000.00  |
| 1565 · Retirement Prefunding Contrib        |            |           |   |  |                    |            |            |
| Check                                       | 09/28/2021 | 805303956 | Kentfield Fire District Payroll Account | A/C #0507976165 -October CEPPT Contributions   | 437 · Cash-Gen Ckg | 18,750.00  | 18,750.00  |
| Total 1565 · Retirement Prefunding Contrib  |            |           |   |  |                    | 18,750.00  | 18,750.00  |
| Total Salaries & Employee Benefits          |            |           |   |  |                    | 479,473.53 | 479,473.53 |
| Services & Supplies                         |            |           |   |  |                    |            |            |
| 2005 · Administrative Expense               |            |           |   |  |                    |            |            |
| Check                                       | 09/10/2021 | Debit     | IBS                                     |  | 439 · Cash-Payroll | 259.10     | 259.10     |
| Check                                       | 09/14/2021 | 805303918 | Business Card                           | 8/5/21 - 9/4/21: Pomi 7901   | 437 · Cash-Gen Ckg | 87.98      | 347.08     |
| Check                                       | 09/14/2021 | 805303926 | Business Card                           | 8/5/21 - 9/4/21: Garcia 3779   | 437 · Cash-Gen Ckg | 536.79     | 883.87     |
| Check                                       | 09/14/2021 | 805303928 | Business Card                           | 8/5/21 - 9/4/21: Marty 5375  | 437 · Cash-Gen Ckg | 61.29      | 945.16     |
| Check                                       | 09/14/2021 | 805303930 | Business Card                           | 8/5/21 - 9/4/21: Viau 7962   | 437 · Cash-Gen Ckg | 230.78     | 1,175.94   |
| Check                                       | 09/14/2021 | 805303931 | Business Card                           | 8/5/21 - 9/4/21: Wilson 3147   | 437 · Cash-Gen Ckg | 185.93     | 1,361.87   |
| Check                                       | 09/14/2021 | 805303935 | Kentfield Fire District Payroll Account | IBS Invoice Fee  | 437 · Cash-Gen Ckg | 259.10     | 1,620.97   |
| Check                                       | 09/14/2021 | 805303936 | Marin County Tax Collector              | Print Shop Services 2021-6898. Acct # 1016463_ Dave Glenn Business Cards                 | 437 · Cash-Gen Ckg | 25.00      | 1,645.97   |
| Check                                       | 09/24/2021 | Debit     | IBS                                     |  | 439 · Cash-Payroll | 128.40     | 1,774.37   |
| Check                                       | 09/28/2021 | 805303958 | Kentfield Fire District Payroll Account | IBS Invoice Fee  | 437 · Cash-Gen Ckg | 128.40     | 1,902.77   |
| Total 2005 · Administrative Expense         |            |           |   |  |                    | 1,902.77   | 1,902.77   |
| 2010 · Auditor                              |            |           |   |  |                    |            |            |
| Check                                       | 09/28/2021 | 805303961 | Maze & Associates                       | Inv #42491 - for professional services performed in September for FY 2020/21 audit       | 437 · Cash-Gen Ckg | 5,350.00   | 5,350.00   |
| Total 2010 · Auditor                        |            |           |   |  |                    | 5,350.00   | 5,350.00   |
| 2050 · Auto/Equipment Repair                |            |           |   |  |                    |            |            |
| Check                                       | 09/14/2021 | 805303920 | Aramark Uniform Services                | (a/c #792113681) Inv #508000122881   | 437 · Cash-Gen Ckg | 71.11      | 71.11      |
| Check                                       | 09/14/2021 | 805303925 | Corbet's                                | (A/C #4675)  | 437 · Cash-Gen Ckg | 15.25      | 86.36      |
| Check                                       | 09/14/2021 | 805303927 | Business Card                           | 8/5/21 - 9/4/21: Glenn- 8422   | 437 · Cash-Gen Ckg | 139.33     | 225.69     |
| Check                                       | 09/14/2021 | 805303928 | Business Card                           | 8/5/21 - 9/4/21: Marty 5375  | 437 · Cash-Gen Ckg | 117.07     | 342.76     |
| Check                                       | 09/14/2021 | 805303929 | Business Card                           | 8/5/21 - 9/4/21: Pasero 8438   | 437 · Cash-Gen Ckg | 79.91      | 422.67     |
| Check                                       | 09/14/2021 | 805303932 | Diego Truck Repair, Inc.                | Invoice #62840   | 437 · Cash-Gen Ckg | 283.59     | 706.26     |
| Check                                       | 09/14/2021 | 805303934 | Jackson's Hardware                      | (a/c #4538) Ref # PO 8954  | 437 · Cash-Gen Ckg | 47.99      | 754.25     |
| Check                                       | 09/14/2021 | 805303939 | DNG Enterprises, Inc.                   | (a/c #3770) Inv # 634832 & 638999  | 437 · Cash-Gen Ckg | 103.58     | 857.83     |
| Check                                       | 09/28/2021 | 805303953 | Diego Truck Repair, Inc.                | Invoice #62929 & 63033   | 437 · Cash-Gen Ckg | 679.50     | 1,537.33   |
| Total 2050 · Auto/Equipment Repair          |            |           |   |  |                    | 1,537.33   | 1,537.33   |
| 2055 · Building Repair                      |            |           |   |  |                    |            |            |
| Check                                       | 09/14/2021 | 805303926 | Business Card                           | 8/5/21 - 9/4/21: Garcia 3779   | 437 · Cash-Gen Ckg | 180.00     | 180.00     |
| Check                                       | 09/14/2021 | 805303937 | Marin Garden Solutions, Inc.            | Inv # 2359   | 437 · Cash-Gen Ckg | 110.76     | 290.76     |
| Check                                       | 09/14/2021 | 805303943 | TK Elevator Corporation                 | Cust #144933 / Inv #3006146295   | 437 · Cash-Gen Ckg | 128.64     | 419.40     |
| Total 2055 · Building Repair                |            |           |   |  |                    | 419.40     | 419.40     |
| 2110 · Domestic Water                       |            |           |   |  |                    |            |            |

Kentfield Fire Protection District  
**Warrant List**  
 September 2021

09/30/21

| Type                            | Date       | Num       | Name                                    | Memo   | Split              | Amount    | Balance   |
|---------------------------------|------------|-----------|---|--|--------------------|-----------|-----------|
| Check                           | 09/29/2021 | 805303960 | Marin Municipal Water Dist.             | (A/C 175859)   | 437 - Cash-Gen Ckg | 446.64    | 446.64    |
| Check                           | 09/29/2021 | 805303960 | Marin Municipal Water Dist.             | (A/C 174720)   | 437 - Cash-Gen Ckg | 194.54    | 641.18    |
| Total 2110 - Domestic Water     |            |           |   |  |                    | 641.18    | 641.18    |
| 2125 - Garbage                  |            |           |   |  |                    |           |           |
| Check                           | 09/14/2021 | 805303938 | Marin Sanitary Service                  | Inv # 2518402 _August 2021 Service                                       | 437 - Cash-Gen Ckg | 759.05    | 759.05    |
| Total 2125 - Garbage            |            |           |   |  |                    | 759.05    | 759.05    |
| 2130 - Gas & Electric           |            |           |   |  |                    |           |           |
| Check                           | 09/28/2021 | 805303963 | Pacific Gas & Electric                  | Acct 1176933549-5 -9/23/2021   | 437 - Cash-Gen Ckg | 642.31    | 642.31    |
| Total 2130 - Gas & Electric     |            |           |   |  |                    | 642.31    | 642.31    |
| 2135 - Gas & Oil                |            |           |   |  |                    |           |           |
| Check                           | 09/14/2021 | 805303927 | Business Card                           | 8/5/21 - 9/4/21: Glenn- 8422   | 437 - Cash-Gen Ckg | 57.34     | 57.34     |
| Check                           | 09/14/2021 | 805303930 | Business Card                           | 8/5/21 - 9/4/21: Viau 7962   | 437 - Cash-Gen Ckg | 46.43     | 103.77    |
| Check                           | 09/14/2021 | 805303941 | North Bay Petroleum                     | Acct 210178 / Inv #3212373   | 437 - Cash-Gen Ckg | 578.62    | 682.39    |
| Total 2135 - Gas & Oil          |            |           |   |  |                    | 682.39    | 682.39    |
| 2145 - Pager System             |            |           |   |  |                    |           |           |
| Check                           | 09/14/2021 | 805303919 | American Messaging                      | A/C #W4-106070/Inv #W4106070V/ September 2021                            | 437 - Cash-Gen Ckg | 23.80     | 23.80     |
| Total 2145 - Pager System       |            |           |   |  |                    | 23.80     | 23.80     |
| 2150 - Prevention               |            |           |   |  |                    |           |           |
| Check                           | 09/14/2021 | 805303933 | Forster & Kroeger Landscape Maintenance | Inv #7814  | 437 - Cash-Gen Ckg | 29,790.00 | 29,790.00 |
| Total 2150 - Prevention         |            |           |   |  |                    | 29,790.00 | 29,790.00 |
| 2200 - S/S-Computer             |            |           |   |  |                    |           |           |
| Check                           | 09/14/2021 | 805303922 | Banshee Networks, Inc.                  | Invoice # 15024 & 15025  | 437 - Cash-Gen Ckg | 1,454.24  | 1,454.24  |
| Check                           | 09/14/2021 | 805303924 | Comcast                                 | a/c# 8155 30 002 0097986   | 437 - Cash-Gen Ckg | 109.87    | 1,564.11  |
| Total 2200 - S/S-Computer       |            |           |   |  |                    | 1,564.11  | 1,564.11  |
| 2205 - S/S-Fire Equipment       |            |           |   |  |                    |           |           |
| Check                           | 09/14/2021 | 805303925 | Corbet's                                | (A/C #4675)  | 437 - Cash-Gen Ckg | 7.18      | 7.18      |
| Check                           | 09/14/2021 | 805303926 | Business Card                           | 8/5/21 - 9/4/21: Garcia 3779   | 437 - Cash-Gen Ckg | 51.53     | 58.71     |
| Check                           | 09/28/2021 | 805303955 | Golden Rule Creations                   | PO 8981 (Inv.#094988)  | 437 - Cash-Gen Ckg | 280.94    | 339.65    |
| Total 2205 - S/S-Fire Equipment |            |           |   |  |                    | 339.65    | 339.65    |
| 2210 - S/S-Medical              |            |           |   |  |                    |           |           |
| Check                           | 09/14/2021 | 805303930 | Business Card                           | 8/5/21 - 9/4/21: Viau 7962   | 437 - Cash-Gen Ckg | 1,198.86  | 1,198.86  |
| Check                           | 09/14/2021 | 805303931 | Business Card                           | 8/5/21 - 9/4/21: Wilson 3147   | 437 - Cash-Gen Ckg | 9.72      | 1,208.58  |
| Total 2210 - S/S-Medical        |            |           |   |  |                    | 1,208.58  | 1,208.58  |
| 2215 - S/S-Office               |            |           |   |  |                    |           |           |
| Check                           | 09/14/2021 | 805303918 | Business Card                           | 8/5/21 - 9/4/21: Pomi 7901   | 437 - Cash-Gen Ckg | 15.24     | 15.24     |
| Check                           | 09/14/2021 | 805303942 | Office Depot                            | Acct# 6011 5661 8341 8338  | 437 - Cash-Gen Ckg | 54.27     | 69.51     |
| Check                           | 09/28/2021 | 805303964 | Ricoh USA, Inc.                         | Acct #1374116-1034296USC / Inv #105410808 (Lease 07/04/2021- 10/03/2021) | 437 - Cash-Gen Ckg | 344.24    | 413.75    |
| Total 2215 - S/S-Office         |            |           |   |  |                    | 413.75    | 413.75    |
| 2220 - S/S-Station              |            |           |   |  |                    |           |           |
| Check                           | 09/14/2021 | 805303926 | Business Card                           | 8/5/21 - 9/4/21: Garcia 3779   | 437 - Cash-Gen Ckg | 483.50    | 483.50    |
| Total 2220 - S/S-Station        |            |           |   |  |                    | 483.50    | 483.50    |
| 2300 - Telephone                |            |           |   |  |                    |           |           |
| Check                           | 09/14/2021 | 805303918 | Business Card                           | 8/5/21 - 9/4/21: Pomi 7901   | 437 - Cash-Gen Ckg | 1,204.08  | 1,204.08  |
| Check                           | 09/14/2021 | 805303945 | Verizon Wireless                        | a/c #342098888-0001 / Inv #9886907046                                    | 437 - Cash-Gen Ckg | 165.48    | 1,369.56  |
| Check                           | 09/28/2021 | 805303946 | AT&T 415 453 1092 859 9                 | BAN #9391050062/ Inv #17042954 - Fire Alarm #2                           | 437 - Cash-Gen Ckg | 22.16     | 1,391.72  |
| Check                           | 09/28/2021 | 805303947 | AT&T 415 457 4695 859 9                 | BAN #9391050061/ Inv #17042953- Fire Alarm Phone #1                      | 437 - Cash-Gen Ckg | 22.16     | 1,413.88  |
| Check                           | 09/28/2021 | 805303948 | AT&T 415 453 7464 025 3                 | BAN #9391050059/ Inv #17042951- Main line                                | 437 - Cash-Gen Ckg | 158.41    | 1,572.29  |
| Check                           | 09/28/2021 | 805303949 | AT&T 415 453 1064 204 1                 | BAN #9391050060/ Inv #17042952 - Elevator                                | 437 - Cash-Gen Ckg | 22.16     | 1,594.45  |
| Total 2300 - Telephone          |            |           |   |  |                    | 1,594.45  | 1,594.45  |
| 2305 - Training                 |            |           |   |  |                    |           |           |
| Check                           | 09/14/2021 | 805303944 | TargetSolutions Learning LLC            | Inv # 32622, Premier Membership Platform                                 | 437 - Cash-Gen Ckg | 1,440.00  | 1,440.00  |
| Total 2305 - Training           |            |           |   |  |                    | 1,440.00  | 1,440.00  |
| Total Services & Supplies       |            |           |   |  |                    | 48,792.27 | 48,792.27 |
| Capital Outlay                  |            |           |   |  |                    |           |           |
| 4005 - MERA Radios & Equipment  |            |           |   |  |                    |           |           |

Kentfield Fire Protection District

Warrant List

September 2021

09/30/21

| Type                                 | Date       | Num       | Name          | Memo                         | Split              | Amount     | Balance    |
|--------------------------------------|------------|-----------|---------------|------------------------------|--------------------|------------|------------|
| Check                                | 09/14/2021 | 805303926 | Business Card | 8/5/21 - 9/4/21: Garcia 3779 | 437 · Cash-Gen Ckg | 678.84     | 678.84     |
| Total 4005 · MERA Radios & Equipment |            |           |               |                              |                    | 678.84     | 678.84     |
| 4041 · C/O - PPE                     |            |           |               |                              |                    |            |            |
| Check                                | 09/14/2021 | 805303926 | Business Card | 8/5/21 - 9/4/21: Garcia 3779 | 437 · Cash-Gen Ckg | 40.43      | 40.43      |
| Check                                | 09/28/2021 | 805303954 | ECMS, Inc.    | Inv #527936                  | 437 · Cash-Gen Ckg | 583.07     | 623.50     |
| Total 4041 · C/O - PPE               |            |           |               |                              |                    | 623.50     | 623.50     |
| Total Capital Outlay                 |            |           |               |                              |                    | 1,302.34   | 1,302.34   |
| Total Expenses                       |            |           |               |                              |                    | 529,568.14 | 529,568.14 |
| TOTAL                                |            |           |               |                              |                    | 0.00       | 0.00       |